

## Contents

Environmentally Friendly Waste Disposal	2
Hints and Tips for Eco-friendly Washing	2
Safety Instructions	3
Parts and Accessories	5
Control Panel and Display	6
Before You Start Washing	8
How to Use the Washing Machine	9
List of Programs	15
Partial Operations Using the Fuzzy Program	19
In Case of Power Outage	22
Care and Maintenance	22
Troubleshooting	24
Error Codes	25
How to Install the Washing Machine	26
Customer Service	30
Specifications	30

**Thank you for purchasing a Hitachi fully automatic washing machine.**

- Please read these operating & installation instructions carefully for proper operation of the machine.
- Please keep these operating & installation instructions for future reference.

# Environmentally Friendly Waste Disposal

## Disposing of the packaging

The shipping package has protected your new washing machine on its way to your home. All materials are ecologically harmless and recyclable. Please contribute to a better environment by disposing of packaging materials in an environmentally conscious manner.

Ask your dealer about current means of disposal.

### **Risk of choking!**

Do not let children play with packaging and associated parts. There is a risk of suffocating on plastic bags and collapsible boxes.

Old appliances are not worthless rubbish. Environment-conscious recycling can reclaim valuable new materials.

## Disposing of your old appliance

### **Risk of death!**

Unplug the power plug from appliances you are no longer using. Cut off the power cord and dispose of it with the plug.

If you wish to discard this product, contact your local authorities or dealer and ask for the correct method of disposal.

# Hints and Tips for Eco-friendly Washing

- Keep to the load limit of each program.
- This washing machine features power-saving operations with a built-in inverter controller which enables the machine to optimize operations according to the conditions of your clothes.
- Add detergent according to the degree of soiling, laundry size, and water hardness. Follow the detergent manufacturer's instructions regarding the amount of detergent to use.
- This washing machine has enhanced water-saving features such as Spin Shower Rinse and uses less water than former models. If you want to save more water, select the Water Save program using the Program button.

# Safety Instructions

This washing machine is designed for home use only.

Before operating the washing machine, please read these safety instructions carefully.



## Warning

Issues which could cause death or serious injury.

### General safety

- Do not dismantle, repair or modify the washing machine.  
→ This could cause malfunction, fire, electric shock or injury.  
→ Contact your local service center for repairs.
- Do not put fire sources or anything inflammable in or near the washing machine (gas, diesel, petroleum, thinner, alcohol, or clothes stained with these substances).  
→ This could cause an explosion or fire.
- Do not pour water on the washing machine when it is running.  
→ This could cause an electric shock.
- Do not climb on the washing machine. Do not place heavy object, drop any object or apply impact on the lid glass.  
→ This could cause lid glass breakage. If any scratch or breakage is found on lid glass, stop using the washing machine and contact your local service center to request inspection and repair.
- It is a malfunction if the tub is still spinning when the lid lock is released and you can open the lid. If this happens, do not touch the laundry inside the tub and stop using the washing machine immediately. Contact your local service center for repair.
- This appliance is not intended for use by persons (including children) with reduced physical, sensory or mental capabilities, or lack of experience and knowledge, unless they have been given supervision or instruction concerning use of the appliance by a person responsible for their safety.

### Installation

- Do not install the washing machine in an extremely humid place, such as a bathroom or a place exposed to rain.  
→ Risk of fire, electric shock, current leakage, corrosion or product damage.
- Do not install the washing machine on a board with castors or on an unstable surface.  
→ This may cause injury or malfunction due to abnormal vibration.
- The washing machine must be grounded if you use a two-pin plug adapter on the three-pin plug.  
→ Not doing so could cause an electric shock.
- Use a new water supply hose to connect the washing machine to the water tap.
- The opening must not be obstructed by carpeting if the washing machine is installed on a carpeted floor.

### Power source and cord

- Do not insert or remove the power plug with wet hands.  
→ This could cause an electric shock.
- Use the rated voltage. Do not connect other devices to the same outlet.  
→ Using the washing machine and other electric appliances on the same outlet may cause the plug to overheat and result in fire.
- Clean off any dust on the power plug.  
→ A dirty or dusty plug may cause a fire.
- Do not use an electric socket or outlet that is damaged or loose.  
→ This could cause an electric shock, short circuit, or fire.
- Do not damage, cut, modify, bend, or fold the power cord.  
→ This could damage the power cord and cause a fire or electric shock.
- Do not use an extension cord on the power cord.  
→ This could cause overheating or fire.
- If the power cord is damaged, it must be replaced by a service agent or repair shop authorized by the manufacturer to avoid risks.

# Safety Instructions

## Child safety

- Keep packaging out of reach of children and infants.  
→ Danger of suffocation.
- Do not let children climb onto the washing machine or to get into the tub. Do not leave boxes or chairs near the washing machine that children could use to climb onto it.  
→ This may cause injury.
- Children should be supervised to ensure that they do not play with the appliance.

## ⚠ Caution

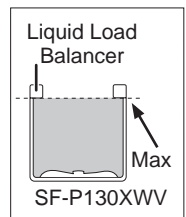
Issues which could cause injury or damage property.

## General safety

- If there is a water outage or you remove the water supply hose and reattach it, close the tap and press the Start/Pause button, then wait 40 seconds and slowly open the tap.  
→ Air pressure from a large amount of air in the water pipes could damage the washing machine.
- Periodically check that the union nut on the water supply hose is tight.  
→ A loose nut may cause a water leak.
- Remove the power plug from the outlet and close the water tap if you will not use the washing machine for a long time.

## Use

- All packaging materials must be removed before using the washing machine.  
→ This could cause malfunction or abnormal vibration.
- Check inside the tub before operating the washing machine.  
→ Check that no pets or small animals are in the tub.
- Do not wash items, such as raincoats, wet suits, ski suits, sleeping bags, cushions, pillows, shoes, shower curtain or other things, through which water does not flow easily.  
→ The washing machine may not work properly, or it could cause injury or damage the washing machine.
- Do not fold and stack large items together, such as blankets, when washing them.
- Do not use a laundry net that is larger than 40 cm on a side.  
→ The clothes may become off balance and cause abnormal vibration during the spin cycle.
- Do not load laundry over the lower part of the liquid load balancer (dotted line).  
→ Doing so could cause laundry to fly out of the tub during the spin cycle and damage the clothes or the washing machine, or cause a water leak.
- Always put detergent into the detergent dispenser when washing laundry.
- Do not use water hotter than 50°C.
- Do not open the lid without using the Lid Open Button.  
→ This may cause the damage of lid and lid open button.
- Do not wash items together with coins, pins, or stones.  
→ This may damage clothes or the washing machine, or cause a water leak. Check inside pockets before washing.
- Do not press the buttons with sharp pointed objects.
- Do not put heavy objects, liquid-filled containers or equipment which produces heat on the washing machine.  
→ This may damage the washing machine or its top.

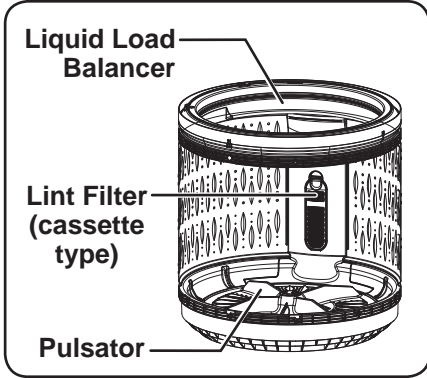


## Care and maintenance

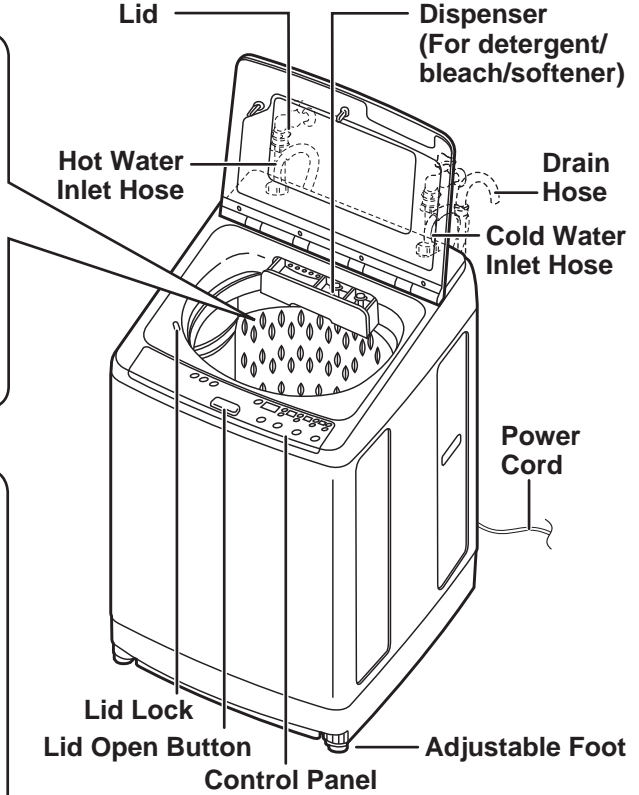
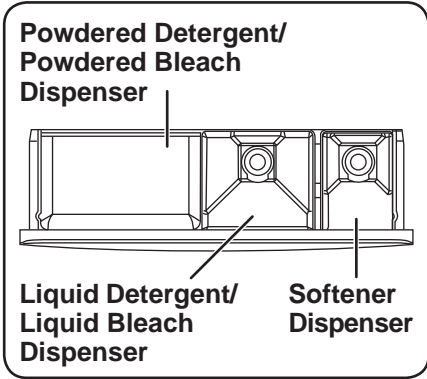
- If detergent, fabric softener or bleach spills on the surface of the machine, clean it up with a damp cloth immediately.  
→ The plastic or steel parts of the washing machine may be damaged.
- Do not place equipment that produces heat near the washing machine.  
→ This may cause deformation of the washing machine.

# Parts and Accessories

## Tub



## Dispenser



## Attachments

Check that the followings are contained in the washer package.  
If not provided, please contact your retailer immediately.

<p>Water supply hose x 2</p>	<p>Water inlet cap</p>	<p>Leg cap x 2</p>	<p>Drain hose assembly and Hose clamp</p>
------------------------------	------------------------	--------------------	---

## Optional accessories

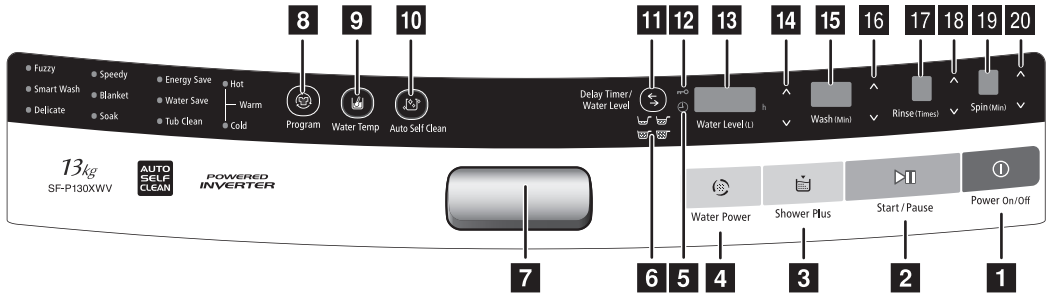
### Laundry Net



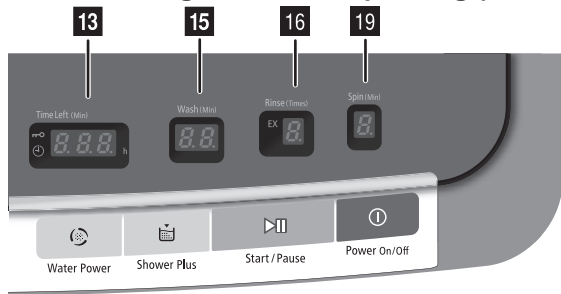
Refer to page 12  
Part number PTSF-140JJS 001

# Control Panel and Display

## While using the control panel (lid open)



## While the washing machine is operating (lid closed)



### 1 Power button

Press this button to switch power on and off. The washing machine automatically switches off when operations are finished. The washing machine also turns off automatically if it is not operated or no button is pressed for 10 minutes after the power has been turned on.

### 2 Start/Pause button

Starts and pauses operation. When the washing machine is paused for over one hour and no operations are done, it turns off automatically.

### 3 Shower Plus button

Supplies water to the tub when this button is pressed. Amount of water supplied depends on load amount or program. If you want to cancel water supply, press this button again.

This function is available during the washing and normal rinsing processes. This button does not function if the water level has already reached highest level of each program.

### 4 Water Power button

Changes the strength of the water flow. The strength of the water flow changes each time this button is pressed.

Water flow strength is shown on the Water Level/Timer indicator. (0: normal, 1: strong, 2: stronger, -1: weak, -2: weaker)

This function is available during the washing and normal rinsing processes.

### 5 Delay Timer indicator

Lights in the Delay Timer mode.

### 6 Detergent Amount indicator

Shows a suitable amount of detergent.

### 7 Lid Open button

Opens the lid. (When opening the lid, please use this button each time.)

## Control Panel and Display

- 8** Program button      Selects programs. The program changes each time the button is pressed.
- 9** Water Temp button      Selects the water temperature. The water temperature changes each time this button is pressed.  
(Warm (Hot and Cold indicator light on) → Hot → Cold → Warm)  
[→ Page 10: Tips for Suitable Water Temperature]
- 10** Auto Self Clean button      Automatically cleans the outside of the tub and the inside of the outer tub to keep the washing machine clean. This setting is switched off at the time of shipment from the factory. Once switched on, the Auto Self Clean function operates every time you wash your laundry.
- 11** Delay Timer/Water Level Switching button      Switches to the Delay Timer mode, and the time set for the Delay Timer is shown on 13, the Water Level/Timer indicator. Press it again to return to the Water Level mode.
- 12** Lid Lock indicator      Locks the lid during the rinse and spin cycle. The lid cannot be opened while this indicator is lit. To release the lock, press the Start/Pause button to pause operation. The lock is automatically released after a short time.
- 13** Water Level/Timer/Remaining time indicator      When the lid is opened, it shows the water level. When the lid is closed, it shows the remaining time.
- 14** Delay Timer/Water Level button      Adjusts the delay time and water level. The maximum amount of water that can be set varies according to the program. In the Delay Timer mode, the delay time can be set between 3 and 12 hours.
- 15** Wash indicator      Shows the washing time.
- 16** Wash button      Changes the washing time. The washing time can be set between 3 and 24 minutes.
- 17** Rinse indicator      Shows the rinse settings.
- 18** Rinse button      Changes the rinse time.
- 19** Spin indicator      Shows the spin time.
- 20** Spin button      Changes the spin time. The spin time can be set between one and 9 minutes.

# Before You Start Washing

## Preparation of the laundry

- Remove any foreign objects (coins, safety pins, etc.).
- Put delicate clothes (knits, lingerie, etc.) in a net.
- Remove large lumps of lint, mud, sand, hair, and pet hair from laundry.
- Tie strings and close fasteners.

## Sorting the laundry

- Sort laundry according to the type of fabric and care label symbols (cottons, blended fabrics, synthetics, wool, hand washable items, etc.).
- Do not wash extremely small loads, such as only a pair of jeans.  
→The clothes may become off balance and cause abnormal vibration during the spin cycle.
- Separate colored and white items.

### Risk of injury!

Do not wash the following items, through which water does not flow easily, because doing so creates abnormal vibration during the spin cycle and could cause injury or malfunction.

- Waterproof items, such as a wet suit, ski suit, shower curtain, etc.
- Items with non-slip rubber backing, such as door mats.
- Cushions, pillows, shoes, etc.

## Detergents and additives

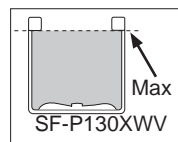
- Use an appropriate amount of detergent according to the Detergent indicator on the washing machine.  
The type and amount of detergent depend on the type of fabric, volume, load size, degree of soiling, and hardness of the water used.  
Use less detergent if:
  - The load is small.
  - The laundry is not very dirty.
- Too much detergent can result in excess foam, which reduces rinse efficiency or may cause a water leak.
- Depending on the detergent brand, detergent may not dissolve completely in the detergent tray if the water pressure is low or the water is too cold. This may be overcome by using detergent dissolved in 1 litre warm water. Pour the solution over the clothes in the tub prior to the starting operation.  
→Page 22: Care and Maintenance
- When using softeners or bleaches, follow the instructions on the package. Scrud is the waxy build-up that can occur within washing machines using fabric softener and washing powder. This build-up is not caused by the washing machine. If Scrud is allowed to build-up it can result in stains on your clothes or an unpleasant smell.
- Detergent remained in drain route may be caused by quality of water or type of detergent. In case of repeatedly using under this condition, it may cause washer trouble.
- This washing machine has wash cycles that are designed to use less water. Low-sudsing detergent must be used if the machine is to work as designed.



# How to Use the Washing Machine

## 1 Sort the laundry

- Sort the laundry according to the type of fabric, care label symbol, and degree of soiling.  
→Page 8: Preparation of the laundry
- Do not exceed the maximum load.
- Laundry shall not exceed this line. Otherwise, laundry may jump out from the wash tub while spinning and it may cause damage.



## 2 Press the Power button to turn on the power

- If no program is selected within 10 minutes, the washing machine automatically switches itself off. Press the Power button again to turn on the power.

## 3 Select and adjust the program

- Select a program with the Program button.  
→Page 15: List of Programs
- You can change the combination or settings of wash, rinse, and spin operations with the Wash, Rinse, and Spin buttons.
- You can switch on the Auto Self Clean function with the Auto Self Clean button.  
→Page 11: How to use the Auto Self Clean function  
→Once switched on, the Auto Self Clean function operates every time you do your laundry. Press the Auto Self Clean button again while the power is on to deactivate the function.

## 4 Press the Start/Pause button

- Before operation starts, the laundry is weighed, and the amount of detergent and water appear on the display.

## 5 Put detergent into the detergent dispenser and close the lid

- Open the detergent dispenser, add the amount of detergent shown on the display, and then close the detergent dispenser.
- The amount of detergent is based on a single 35-gram scoop of powder detergent. Since the required amount of detergent varies depending on the type of detergent, follow the instructions on the package of detergent.
- For liquid detergent, follow the instructions on the package and add it to the liquid detergent/liquid bleach dispenser.
- Add softener to the softener dispenser according to the instructions on the package of softener. The softener is added to the tub automatically before the final rinse.
- For liquid bleach, follow the instructions on the package and add it to the liquid detergent/liquid bleach dispenser.
- The speed that the lid closes may vary, depending on the temperature, however, this is not abnormal.

# How to Use the Washing Machine

– Pausing a program:	Press the Start/Pause button. The washing machine will switch itself off if it is not restarted within 1 hour.
– Adding clothes partway through a program:	Press the Start/Pause button to pause operation and add your clothes. The lid is locked while the tub is spinning, so wait until the tub stops completely and the lid lock is automatically released. After adding the clothes, close the lid and press the Start/Pause button to restart operation. * Note: It is not recommended to add a large amount of clothes as the washing machine first measures the load size to determine optimum operation.
– Adding water partway through a program:	Press the Shower Plus button. Adds water when you press the button. Water stops being added when you press the button again or the maximum level is reached. * Note: This function can not operate in the Tub Clean Programs.
– Changing strength of water flow:	Press the Water Power button. Repeatedly press the button to adjust the strength through five levels. * Note: This function operates in the Fuzzy, Smart Wash, Delicate, Speedy, Small Load, and Water Save courses for washing and normal rinsing programs. Even if the indicator of strength changes, it may not change the strength according to the process or the load amount.
– Terminating a program:	Press the Start/Pause button, and press the Power button to turn off the power.


## Tips for Suitable Water Temperature

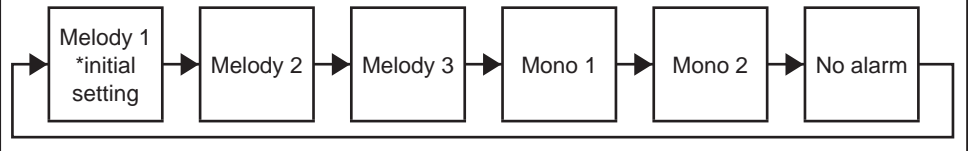
■ By Soil Level	Hot	For heavily soiled white and colorfast cottons, linens, permanent press synthetics.
	Warm	For medium to heavily soiled dark or non colorfast fabrics, white and colored synthetics, permanent press clothes. Woolen items are also recommended.
	Cold	For lightly to medium soiled items.

- Default setting is Warm and the water temperature can be selected manually for every program.
- For the rinsing process, water temperature is automatically set to Cold.
- Selected Water Temp indicator is lit during the operation.

## 6 Program ends

- The alarm sounds when a program ends.

The alarm can be deactivated or the sound can be changed in 5 types if the  button of water level is pressed for at least 3 seconds.



- The washing machine automatically switches off when the operations are finished.

### How to use the Auto Self Clean function

1. Press the Power button to turn on the power.
2. Select a program.
3. Press the Auto Self Clean button, and press the Start/Pause button.

- The setting is switched off at the time of shipment from the factory. Once switched on, the Auto Self Clean function operates every time you do your laundry.
- Prior to the final spin cycle, the outside of the tub, the backside of the pulsator, and the inside of the outer tub are washed to eliminate dirt and mold.
- To deactivate the Auto Self Clean function, press the Auto Self Clean button again while the power is on.

- The Auto Self Clean function runs just before the spin cycle begins in each program.
- The Auto Self Clean function runs even when the washing machine has started operation from rinsing.
- The Auto Self Clean function cannot be set or cancelled during operation.
- The Auto Self Clean function is automatically cancelled when:
  - The spin time is manually set to 1 minute.
  - Spin-only operation is set.
  - No spinning is set.
- Depending on the type and degree of dirt, some dirt may not be washed with the Auto Self Clean function.
- If the washing machine is seldom used, some dirt may not be washed with the Auto Self Clean function.
- To clean the tub more completely, we recommend using the Tub Clean program along with the Auto Self Clean function.

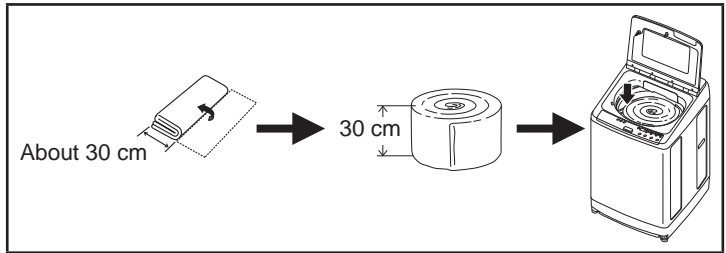
- The Auto Self Clean function is deactivated when one of the following programs is selected.
  - Blanket
  - Tub Clean
- When the Auto Self Clean function is running, some water may flow out from the softener dispenser. This is the normal operation of the washing machine and does not indicate a malfunction.

# How to Use the Washing Machine

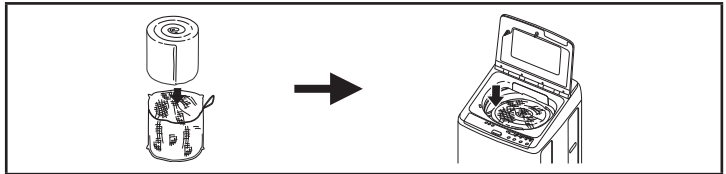
## How to use the Blanket program

1. Prepare the laundry.

- Fold large items, such as quilts or blankets, as follows. They should not be taller than 30 cm after they are folded.



If it exceeds 30 cm, use a laundry net, which is sold separately.  
(Laundry net: Product number PTSF-140JJS 001)



2. Press the Power button to turn on the power.
3. Select the Blanket program.
4. Add detergent and close the lid.
5. Press the Start/Pause button.

### Items you can wash with the Blanket program

- Washable quilts

Machine washable quilts with synthetic (polyester) batting.

When not using the optional laundry net:

150 cm x 200 cm or smaller, and less than 1.5 kg

When using the optional laundry net:

174 cm x 225 cm or smaller, and less than 2 kg

(Laundry net: Product number PTSF-140JJS 001)

- Washable blankets

Up to 3 kg of synthetic blankets that are labeled as hand washable.

– For electric blankets, follow the instructions for the electric blanket.

- Other washable items

Mattress pads labeled as hand washable.

- Do not fold and stack large items together, (such as sheets) when washing them.  
→ The clothes may become off balance and cause abnormal vibration during the spin cycle.

# How to Use the Washing Machine

## How to use the Tub Clean program

- Use this program separately from other washing programs. (Do not put laundry into the tub.)
- 1. Press the Power button to turn on the power.
- 2. Select the Tub Clean program.
  - The Tub Clean program can be set to 3 or 11 hours. At first, 3 hours is set. Press the Program button again to set 11 hours.
  - Water is added to the maximum level to wash away dirt you cannot see on the tub and outer tub. After that, Normal Rinse is performed twice to flush out any remaining dirt or tub cleaner.
- 3. Close the lid, and press the Start/Pause button. The washing machine starts pouring water into the tub. (Close the lid when C3 is displayed)
- 4. Press the Start/Pause button and open the lid, add tub cleaner, according to the package, to the tub. (Liquid peroxide-based bleach is also effective as a tub cleaner. Since the required amount of bleach varies depending on the type of bleach, follow the instructions on the package of bleach.)
- 5. Close the lid, and press the Start/Pause button.

## How to use the Delay Timer

- 1. Press the Power button to turn on the power.
- 2. Select a program.
- 3. Press the Delay Timer/Water Level Switching button and select the time to finish washing. Each press of the button subtracts an hour starting from 12 hours to 3 hours later.
- 4. Press the Start/Pause button.
- 5. Add detergent and close the lid. The power turns off after a short time.
- 6. Operations finish at the set time.
  - The Delay Timer is unavailable for the Blanket, and Tub Clean programs.
  - To change the setting, press the Power button and do the settings again.
  - If there is a power outage while the timer is set, the timer setting is cancelled. If this happens, press the Power button again and reset the timer.
  - To prevent your laundry from wrinkling, remove it as soon as possible after washing is done.

# How to Use the Washing Machine

Australian Water Efficiency & Energy Efficiency Labels are based upon the below wash settings:

## **Normal Warm Wash Water Saving settings:**

Water Save, Wash Temp. Warm, Water Level 68, Wash 48mins, Rinse 2 (default), Spin 9min, Water Power +1, Detergent dissolved in 1 litre warm water.

1. Power On
2. Push Program button 7 times to illuminate Water Save
3. Set Wash Temperature to Warm by pushing the Water Temp button until both Hot and Cold settings are illuminated.
4. Set Water Level to 68 using the up / down buttons
5. Set Wash Time to 48mins using the up / down buttons
6. Rinse operation is set by default, please do not push Rinse button
7. Set Spin to 9 min using the up / down buttons
8. Select Water Power by pushing the Water Power Button until 1 is displayed
9. Close Washing Machine lid
10. Push Start button

## **PROCEDURE WARM WASH**

## **Cold Wash Water Saving Setting:**

Water Save, Wash Temp. Cold, Water Level 68, Wash 48mins, Rinse 2 (default), Spin 9min, Water Power +1

1. Power On
2. Push Program button 7 times to illuminate Water Save
3. Set Wash Temperature to Cold by pushing the Water Temp button until only the Cold setting is illuminated.
4. Set Water Level to 68 using the up / down buttons
5. Set Wash Time to 48mins using the up / down buttons
6. As Rinse operation is set by default, please do not push Rinse button
7. Set Spin to 9 min using the up / down buttons
8. Select Water Power by pushing the Water Power Button until 1 is displayed
9. Close Washing Machine lid
10. Push Start button

## **PROCEDURE COLD WASH**

Note 1: This washing machine has wash cycles that are designed to use less water. Low-sudsing detergent must be used if the machine is to work as designed.

Note 2: Water pressure at test is 350 kPa.

# List of Programs

: Default settings

: Changeable settings (via corresponding button)

Program		Fuzzy	Smart Wash	Delicate
Maximum load	P130XWV	13 kg		6.5 kg
Amount of water	P130XWV	60 to 99 L (adjusted automatically)		77 L
		60 to 99 L		68 to 90 L
Wash		15 min	38 min	6 min
		3, 9, 12, 15, 18, 24 min, or none	10, 18, 24, 28, 31, 38 min, or none	-
Rinse		Spin Shower Rinse 1 time + Normal Rinse 1 time		Normal Rinse 1 time
		Normal Rinse 2 times, Normal Rinse 1 time, or none, Normal Rinse 3 times		Normal Rinse 1 time, or none, Normal Rinse 3 times, Normal Rinse 2 times
Spin	Time	6 min		3 min
		1, 3, 6, 9 min, or none		1, 3, 6, 9 min, or none
Required time (guide)	P130XWV	40 to 67 min	45 to 83 min	29 min

# List of Programs



: Default settings



: Changeable settings (via corresponding button)

Program		Speedy	Blanket	Soak			
				0.5 hrs	1 hrs	3 hrs	5 hrs
Maximum load	P130XWV	6.5 kg	3 kg	13 kg			
Amount of water	P130XWV	73 L	103 L	60 to 99 L (adjusted automatically)			
		60 to 82 L	90 to 103 L	60 to 99 L			
Wash		3 min	25 min	30 min	60 min	180 min	300 min
		3, 9, 12, 15, 18, 24 min, or none	-	-	-	-	-
Rinse		Normal Rinse 1 time	Normal Rinse 2 times	Spin Shower Rinse 1 time + Normal Rinse 1 time			
		Normal Rinse 1 time, or none, Normal Rinse 3 times, Normal Rinse 2 times	-	Normal Rinse 2 times, Normal Rinse 1 time, or none, Normal Rinse 3 times, or none			
Spin	Time	3 min	9 min	6 min			
		1, 3, 6, 9 min, or none	1, 3, 6, 9 min, or none	1, 3, 6, 9 min, or none			
Required time (guide)	P130XWV	25 min	73 min	93 to 102 min	123 to 132 min	244 to 253 min	364 to 373 min



# List of Programs




 : Default settings

 : Changeable settings (via corresponding button)

Program		Energy Save	Water Save
Maximum load	P130XWV	13 kg	13 kg
Amount of water	P130XWV	60 to 99 L (adjusted automatically)	60 to 96 L (adjusted automatically)
		60 to 99 L	60 to 96 L
Wash		48 min	15 min
		-	3, 9, 12, 15, 24, 48 min, or none
Rinse		Spin Shower Rinse 1 time + Normal Rinse 1 time	Spin Shower Rinse 2 times
		-	Normal Rinse 2 times, Normal Rinse 1 time, or none, Normal Rinse 3 times
Spin	Time	5 min	6 min
		-	1, 3, 6, 9 min, or none
Required time (guide)	P130XWV	84 to 90 min	39 to 120 min

# List of Programs

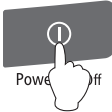
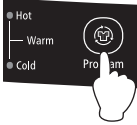
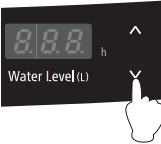

- The wash time and the spin time may change during the program depending on the weight and type of laundry being washed.
- The required times are guidelines. More time may be required than is noted here depending on the water pressure and the type of laundry.
- Programs cannot be changed after they are started. To change them, turn the power off and then on again, then select a program.
- When the Auto Self Clean function is running, about 10 more minutes and 14 more liters of water are needed.
- We do not recommend using fabric softener when the Water Save program is selected.
- The Water Save program cycle is the recommended program cycle for a medium soiled load of laundry at the rated capacity.
- Spin Shower Rinse\* is used in the Fuzzy and Energy Save programs to enhance water-saving performance without compromising the efficiency of rinsing.  
\* Spin Shower Rinse: A powerful shower and centrifugal force rinse out detergent more effectively.
- The clear part of the lid and control panel may become foggy or may form dew on the edge of lid if you use hot water to wash your laundry, however, this is not abnormal. Wipe it off after washing your laundry.
- It has the potential not to be enough for max load according to the kind of clothes.
- Even if you set the delay timer, it may start soon according to the required time of the program.
- Water flow is adjusted automatically according to the amount of load and water level. When loads are heavy and water level are high, water flow is adjusted at slower rate to maintain the performance of washer.
- Amount of detergent is indicated according to following table as a guide.

Load (guide)	Water Level	Display of cup mark (guide)	Amount of detergent
8~13 kg	88~99 L		59~70 g
4~7 kg	73~86 L		49~57 g
0~3 kg	60~68 L		40~45 g


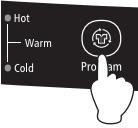
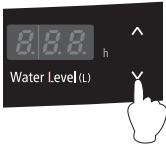



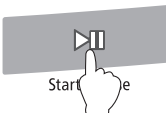
(SF-P130XWV)

\* Display of cup mark is based on a single 35-gram scoop of powder detergent.  
The amount of detergent is based on a type of 20-gram per 30-liter.  
Since the required amount of detergent varies depending on the type of detergent, follow the instructions on the package of detergent.

# Partial Operations Using the Fuzzy Program

If you want...	To customize the wash program	To reuse the wash water and separate your laundry	To not spin the laundry because you are worried about wrinkles
Operations	Wash ⇒ Rinse ⇒ Spin	Wash only	Wash ⇒ Rinse
Setting method			
1.		Turn on the power.	
2.		Select the Fuzzy program.	
3.		Set the amount of water. If you do not set the amount of water, it is set automatically based on the weight of the laundry.	
4.	Set the operations	<ul style="list-style-type: none"> <li>■ Set the wash time with the Wash button.</li> <li>■ Set the number and type of rinses with the Rinse button.</li> <li>■ Set the spin time with the Spin button.</li> </ul>	<ul style="list-style-type: none"> <li>■ Set the wash time with the Wash button.</li> <li>■ Press Rinse button repeatedly until rinse indicator turns off.</li> <li>■ Press Spin button repeatedly until spin indicator turns off.</li> </ul>
5.		Press the Start/Pause button to start.	
Remarks	Operates according to the wash, rinse, and spin settings.	Stops while the wash water is still in the tub.	Stops while the rinse water is still in the tub.

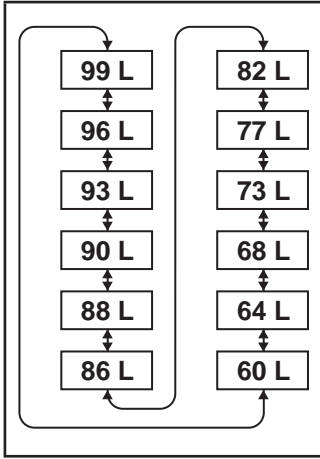
# Partial Operations Using the Fuzzy Program

If you want...	To rinse only	To rinse and spin	To drain and spin
Operations	Rinse only	Rinse ⇒ Spin	Drain ⇒ Spin
Setting method			
1.	 <p>Turn on the power.</p>		
2.	 <p>Select the Fuzzy program.</p>		
3.	 <p>Set the amount of water. If the amount of water is not set, then maximum water level is used.</p>		Cannot be used.
4.	   <ul style="list-style-type: none"> <li>■ Set the number and type of rinses with the Rinse button.</li> <li>■ Press Wash button repeatedly until wash indicator turns off. Press Spin button repeatedly until spin indicator turns off.</li> </ul>	<ul style="list-style-type: none"> <li>■ Set the number and type of rinses with the Rinse button.</li> <li>■ Set the spin time with the Spin button.</li> <li>■ Press Wash button repeatedly until wash indicator turns off.</li> </ul>	<ul style="list-style-type: none"> <li>■ Set the spin time with the Spin button.</li> <li>■ Press Wash button repeatedly until wash indicator turns off.</li> <li>■ Press Rinse button repeatedly until rinse indicator turns off.</li> </ul>
5.	 <p>Press the Start/Pause button to start.</p>		
Remarks	Drains water and spins before rinsing. Stops while the rinse water is still in the tub.	Drains water and spins before rinsing.	Drains water and spins.

# Partial Operations Using the Fuzzy Program

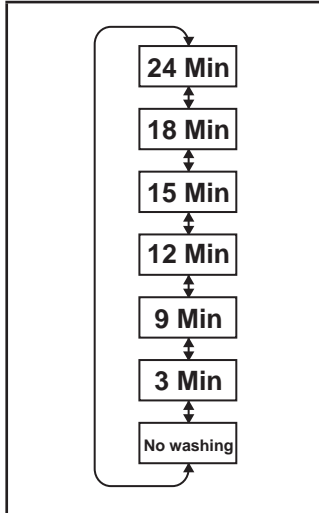
■ Repeatedly press the **▲** **▼** buttons until the wash, rinse, and spin settings you want are set. If the indicator is not lit, that operation is not performed.

■ You can set the amount of water each time you press the Water Level button in a range from 60 to 99 L.

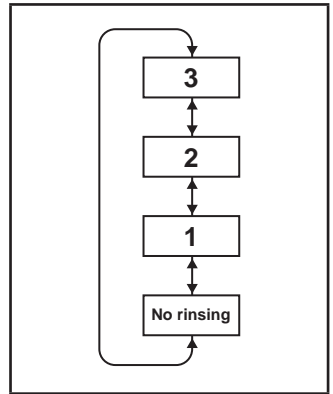


SF-P130XWV

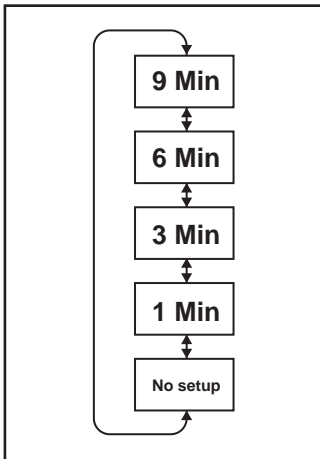
■ You can set the wash time each time you press the Wash button in a range from 3 to 24 minutes and no washing.



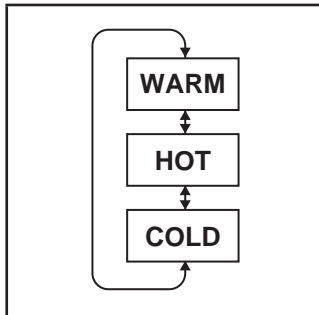
■ You can set the number and type of rinses by pressing the Rinse button. Each time you press the Rinse button the setting changes in sequence, from Normal Rinse 3 times, Normal Rinse 2 times, Normal Rinse 1 time, no rinsing.



■ You can set the spin time each time you press the Spin button in a range of 1 to 9 minutes and no spinning.



■ You can select type of water by pressing Water Temp button.



## In Case of Power Outage

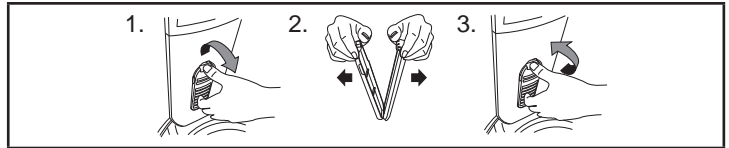
### If there is a power outage

The washing machine is equipped with a restart function. If a power outage occurs while the washing machine is operating, the cycle (i.e., wash, rinse, or spin) at that time is saved, and when the power is restored, press the power button to power on and press the Start/Pause button to restart from the interrupted cycle. If there is a power outage during the spin cycle, the lid is locked and cannot be opened. After the power is restored, and press the power button to power on, the lock is released.

## Care and Maintenance

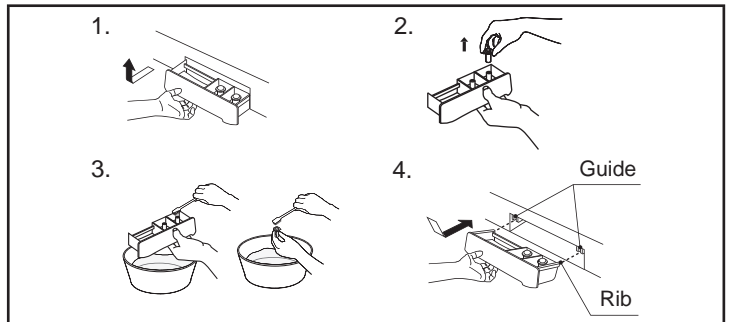
### Cleaning the lint filter (cassette type)

1. Press down on the knob on the top of the lint filter (cassette type) and pull it towards you.
2. Open the lint filter (cassette type) to the sides and remove the lint that is inside.
3. Reverse the procedure to replace the lint filter (cassette type).



### Cleaning the dispenser

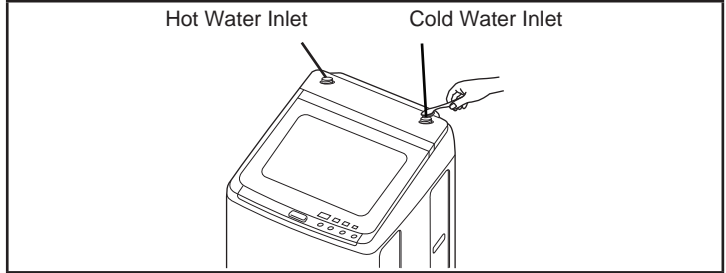
1. Pull the dispenser and tilt it upwards to remove it.
  2. Pull off the caps.
  3. Use a brush or something to clean the parts.
  4. To remount, tilt the dispenser, align the rib to guide and insert it.
- When you replace the caps, press it until it stops completely. If it is not pressed all the way in, the softener, liquid detergent and liquid bleach will not be added to the tub completely and some will remain in the dispenser.



# Care and Maintenance

## Cleaning the water supply inlet

1. Close the tap.
2. Disconnect the water supply hose from the top of the washing machine. (Water in the hose may be drained when you disconnect the hose.)
3. Use a brush or something to clean the water supply inlet of the washing machine.
4. Reverse the procedure to replace the water supply hose.



## Care and maintenance of the washing machine

- Clean the machine body.  
Wipe the outside of the washing machine with a soft cloth. Do not use solvents such as alcohol or benzene.
- If you use a chemically treated cloth, use it according to the instructions for the product.
- If detergent or softener gets on the washing machine, quickly wipe it off. The surface could be damaged.

# Troubleshooting

Problem	Possible cause
Does not operate	<ul style="list-style-type: none"> <li>● The power plug is not inserted in the power outlet.</li> <li>● There is a power outage.</li> <li>● The Delay Timer has been set.</li> </ul>
It is wet, even though it is the first time to use it (drain hose, tub, etc.)	<ul style="list-style-type: none"> <li>● There may be moisture or water left in the tub or hoses from the performance test before shipping from the factory.</li> </ul>
The remaining time increases during operation	<ul style="list-style-type: none"> <li>● The remaining time is adjusted to compensate for the speed of the incoming water.</li> </ul>
Water is added again during the washing process	<ul style="list-style-type: none"> <li>● Water is added automatically up to the set water level if the water level falls because water is absorbed by the laundry.</li> </ul>
Wash time is longer than the time that was set manually	<ul style="list-style-type: none"> <li>● If the water pressure is low, the operating time may increase due to a longer water supply time.</li> </ul>
The washing machine stops during the spin cycle and starts adding water	<ul style="list-style-type: none"> <li>● If the laundry is extremely off balance when the spin cycle starts, the spin cycle stops and the rinse cycle starts to rebalance the laundry. After the load is rebalanced, the spin cycle starts again.</li> </ul>
During the spin cycle, the tub spins increasingly faster	<ul style="list-style-type: none"> <li>● This is to more efficiently remove water.</li> </ul>
Sound of water is heard when the tub moves	<ul style="list-style-type: none"> <li>● That is the sound of water in the Liquid Load Balancer, which is used for balancing when the tub is spinning.</li> </ul>
The tub does not fill up when water is added from a bucket	<ul style="list-style-type: none"> <li>● If drain hose end is set lower than 1 m, water is discharged.</li> </ul>
The lid does not open	<ul style="list-style-type: none"> <li>● When the lid lock indicator is lit, the lid is locked and cannot be opened.</li> <li>● The lid is locked and cannot be opened because there was a power outage or the power was turned off while the lid lock indicator was lit. Turn on the power and wait for the lock to be released.</li> </ul>
The strength of water flow does not change in spite of changing the indicator	<ul style="list-style-type: none"> <li>● It may not change the strength of water flow according to the process and the load amount. It is not abnormal.</li> </ul>



# Error Codes

Error code	Description	Things to check	Solution
<b>C0</b>	Laundry overload	<ul style="list-style-type: none"> <li>• Check if the laundry overloaded?</li> </ul>	Decrease the amount of laundry according to the instructions on page 15-17.
<b>C1</b>	Water is not supplied	<ul style="list-style-type: none"> <li>• Is the tap open?</li> <li>• Has dirt collected in the water supply inlet filter?</li> <li>• Are the water pipes or water supply hose frozen?</li> <li>• Has the water supply been disrupted?</li> </ul>	Check the tap, water supply inlet filter, water pipes, and water supply hose.
<b>C2</b>	Water does not drain	<ul style="list-style-type: none"> <li>• Is the drain hose blocked?</li> <li>• Is the drain hose twisted, crushed, or frozen?</li> <li>• Is the drain hose connected correctly?</li> <li>• Is the drain outlet too high?</li> <li>• Does water flow out from drain hose while supplying water?</li> </ul>	Check drain hose, drain pump and drain outlet. If C2 still appears after removing the possible cause, please contact your local service center for repair.
<b>C3</b>	The tub does not spin or stops spinning	<ul style="list-style-type: none"> <li>• Is the lid open?</li> </ul>	Close the lid.
<b>C4</b>		<ul style="list-style-type: none"> <li>• Is the laundry all on one side of the tub?</li> <li>• Does the laundry include too many thick items like cotton blankets or jeans or too many large items like sheets?</li> <li>• Is the washing machine wobbling, or is the floor under the washing machine slanted?</li> <li>• Are there any unwashable things in the tub? →Page 8: Preparation of the laundry (sorting the laundry)</li> </ul>	Large loads may require reloading the laundry - evenly dispersed around the tub, without tangles. A small load may need a few more items added. (If there is only one item in the tub, it is likely to become unbalanced.)
<b>C8</b>	The lid cannot be locked	<ul style="list-style-type: none"> <li>• Is the lid closed?</li> <li>• Are there any foreign objects in the lock?</li> </ul>	Check that the lid is completely closed. Check that there are no foreign objects in the lock.
<b>C9</b>	The lid lock cannot be released	<ul style="list-style-type: none"> <li>• Are there any foreign objects in the lock?</li> </ul>	Turn the power off and then on again and wait a little while. If the lid is still locked, contact a service center for repair.
<b>Ch</b>	The spinning speed does not reach the specified value.	<ul style="list-style-type: none"> <li>• Check if there is too much powder detergent?</li> <li>• Check if the drain hose is clogged?</li> <li>• Check if the drain hose is installed correctly?</li> </ul>	Check the amount of powder detergent used. Check the drain hose and its installation.

■ If warning sign such as “F1”, “F9”...etc. are shown in the display, stop operating the washer immediately and contact an authorized service dealer or a service agent for further inspection and/or repairing.

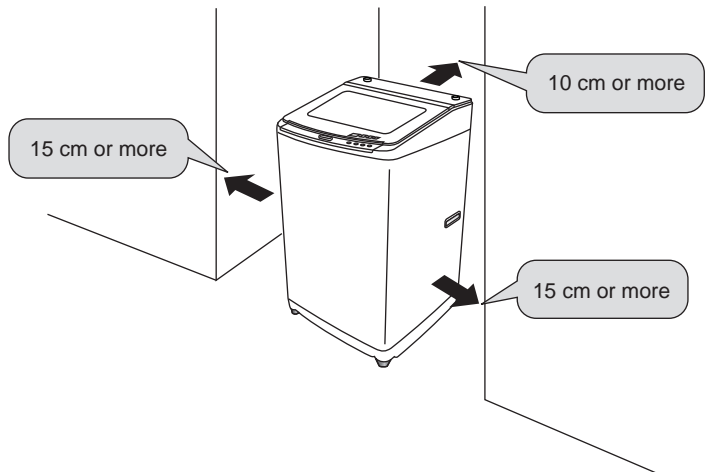
# How to Install the Washing Machine

## Safety precautions

- Do not use a damaged power plug, doing so is dangerous. Contact a repair center that is certified by the manufacturer to replace the plug.
- If the outlet you are using is a 2-pin outlet, use an adapter to change from three pins to two pins. If you do this, be sure to connect an earth wire. There is a risk of electric shock if you do not connect an earth wire.
- Do not connect an earth wire to a gas pipe, telephone wire, water pipe, or lightning rod. Remove the power plug from the electric outlet when you are attaching an earth wire.
- You do not need to attach an earth wire if the electric outlet is a 3-pin type with earth terminal.

## Where to install the washing machine

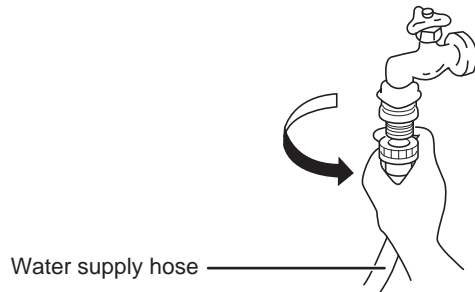
- The hoses may be damaged or rupture if they freeze. Do not install the washing machine outside or any other place where there is a risk of freezing.
- Install the washing machine on a solid level floor to avoid excessive vibration and noise.
- Do not install the washing machine in an extremely humid place, such as a bathroom or a place exposed to rain.
- Do not install the washing machine in a slippery or unstable location. Doing so could cause abnormal vibration.



# How to Install the Washing Machine

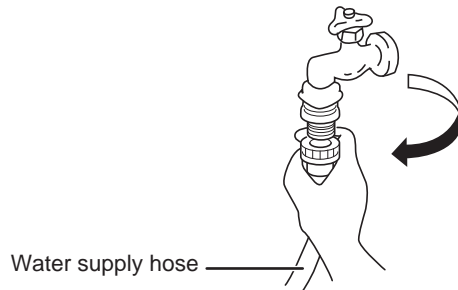
## Connecting water supply hose to the tap

- If the water supply hose installs, tighten the water supply hose to water tap.



## ■ Dismantling

1. Turn off water tap.
2. Press start button and run for 10 seconds.
  - This is to prevent water from spilling out during dismantling.
3. Dismantle the water supply hose.



# How to Install the Washing Machine

## Connecting the water supply hose

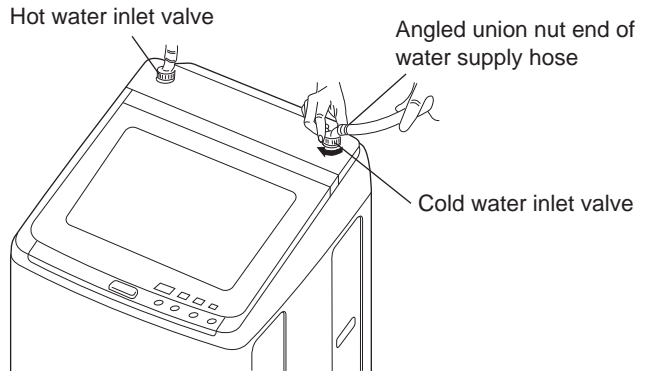
- **Main unit**

Screw the union nut to arrow direction to firmly attach the water supply opening.

### Precautions

**Make sure that the union nut between water supply hose and main unit is tightly screwed.**

- Water leakage may occur if union nut is loosened.



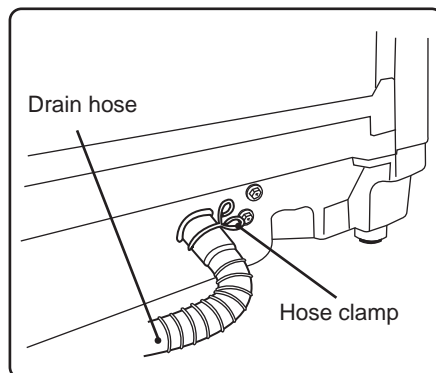
- **Water leakage may occur if union nut is loosened.**
- **Unscrew the union nut when dismantling.**

## Connecting the drain hose

- Connect the drain hose to drain outlet and clamp tightly by the hose clamp.
- Hook the U-shape end of the drain hose over the rim of a sink to drain.

### (Note)

- Never lay down the drain hose, as water will be discharged.
- The discharge height should be approx. 1 m above the base of the washer.
- Be sure the drain hose is properly routed so it will not kink or lift from the sink.



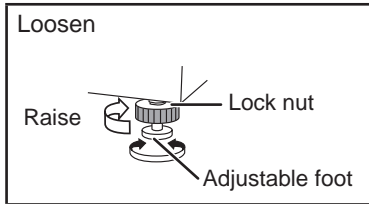
# How to Install the Washing Machine

## Connecting the power

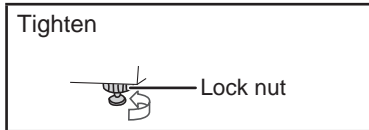
- Connect the washing machine correctly to a grounded AC power supply.
- The voltage of the power supply must match the voltage rating of the washing machine.
- Do not use extension cords or overload the power outlet by using power strips.

## Checking levelness

- Be sure the washing machine does not wobble.
- Use the spirit level on the washing machine to check for levelness. Adjust the adjustable foot if the washing machine is not level.



Rotate the lock nut in the direction of the arrow to loosen it and then rotate the adjustable foot to stabilize the washing machine.



When the adjustment is finished, rotate the lock nut in the direction of the arrow to tighten it.

## Checking after installation

If any of the following problems or other abnormalities occur, immediately unplug the power plug and contact your local service center.

- The washing machine does not operate when the power is turned on.
- The power cord is damaged.
- There are abnormal vibrations or sounds during operation.
- There is a smell of burning.

## Customer Service

If the washing machine malfunctions, check the Operating & Installation Instructions thoroughly before you call for repairs.

If you are unable to identify or solve the problem, contact your local service center.

When you call the service center, you will need to tell them the model of the washing machine, describe the malfunction, and give them your address and phone number.

## Specifications

<b>Model</b>	<b>SF-P130XWV</b>
<b>Power supply</b>	See the rating plate on the back of the washing machine.
<b>Standard water level</b>	99 L (maximum water level)
<b>Standard amount of water used</b>	175 L (Fuzzy program operation)
<b>Water pressure</b>	Cold water : 30~800 kPa (0.3~8kgf/cm <sup>2</sup> ) Hot water : 30~500 kPa (0.3~5kgf/cm <sup>2</sup> )
<b>Dimensions</b>	Width 640 mm x Depth 696 mm x Height 1040 mm
<b>Weight</b>	51 kg



