

# SF-P200XWV

20KG TOP LOAD WASHING MACHINE

## AUSTRALIA'S LARGEST DOMESTIC WASHING MACHINE

### Features

- 20kg Ultra Large Capacity
- 3 Star Water Rating
- 3 Star Energy Rating
- Auto Self Clean Function
- Super Wide 616mm Bowl
- Stylish Toughened Glass Lid with Soft Closing function
- Sensor Safety Lid Lock
- Allergy UK Approved 99% Mold & Bacteria Reduction
- Ultra-Stream Wash for efficient circulation of water
- Shower Plus Function
- Quick & Simple 4 Button Control Panel (lid closed)
- Fine Adjustment Settings for individual settings (lid open)
- Powered Inverter controls tub and pulsator rotation speed for optimum operation
- Delay Timer
- Auto Power Off
- 11 Washing Programs
- Custom Memory Option
- Built-in Spirit Level Indicator
- 700RPM Spin Speed



**POWERED  
INVERTER**

**AUTO  
SELF  
CLEAN**

**AUTO  
SELF  
CLEAN**

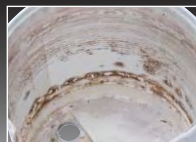
### Auto Self Clean – The Tub Stain Fighter

Don't remove dirt, stop it from building up – every time you do your laundry, the washing machine automatically cleans itself!

In a washing machine, dirt doesn't easily accumulate where water collects or where it hits during spin-drying. In places that aren't touched by water, however, dirt gradually accumulates with use.



Dirt on the outside of the stainless steel tub



Dirt on the inside of the outer tub



Dirt on the bottom of the stainless steel tub

\*Hitachi washer-dryer. The level of dirt differs depending on conditions of use.

#### Tub Clean Program for Attached Dirt

Auto Self Clean cannot remove accumulated dirt. Using special detergent, the Tub Clean program thoroughly removes attached dirt. Regularly using this program together with Auto Self Clean keeps the tub clean.

A shower of clean water cleans both the tubs as the stainless steel tub rotates at high speed.



Inside of the outer tub

Outside of the stainless steel tub

Blades and tub rotate to powerfully agitate water in the stainless steel tub and clean off dirt.



Bottom of the stainless steel tub

Bottom of the outer tub behind the blades

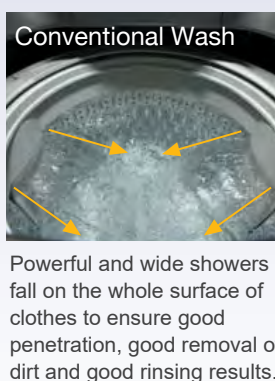


Effective removal of mold and bacteria endorsed by Allergy UK



## Ultra-Stream Wash

With Ultra-Stream Wash, the large X-shaped fins on the surface of the pulsator powerfully agitate the laundry ensuring detergent-rich water penetrates into clothes. At the same time, the reverse side of the pulsator strongly pushes 70L/min of water upward from the bottom of the tub, producing powerful water circulation that thoroughly removes dirt while reducing water consumption.



Powerful and wide showers fall on the whole surface of clothes to ensure good penetration, good removal of dirt and good rinsing results.

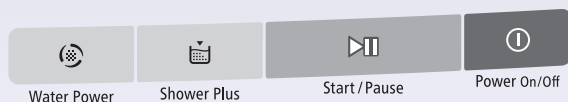
## Water Power

Simply pressing the Water Power button lets you change water flow from Powerful (2) to Soft (-2) in five steps. Choose Powerful for hard, thick items, and Soft for soft, delicate items.

## Shower Plus

Add water as desired during a wash by press the Shower Plus button once, and the water level increases. To stop the water at a desired level, just press the Shower Plus button again.

## 4-Button Control



With just four buttons, you can easily adjust wash settings while the unit is operating. Thanks to the simple, easy-to-use buttons and the glass top design, you can adjust water power and water level while looking at clothes being washed in the tub.

## Fine Adjustment Settings



With the lid open, there is full access to all Fine Adjustment control settings and programs. In addition, settings are shown on a large LED display that makes it easy to perform fine adjustments.

SF-P200XWV ~ 20kg

### WASH ALL OF THIS IN 1 LOAD\*

- 7x Sheets
- 14x Bath towels
- 6x Tablecloths
- 10x Shirts
- 9x T-shirts
- 12x Pillow cases
- 14x Undershorts
- 15x Wash Cloths
- 14x Handkerchiefs
- 104\* ITEMS TOTAL**

\*Based on per AU/NZS 2040 1:2007

ENERGY RATING

The more stars the more energy efficient

Energy consumption

Model	Cold wash kWh per year	Warm wash kWh per year
SF-P200XWV	135	854

For more information, refer to [www.energyrating.gov.au](http://www.energyrating.gov.au)

WATER RATING

The more stars the more water efficient

266 litres per wash

Load capacity 20 kg

In accordance with AS/NZS 6400

Hitachi Model SF-P200XWV Using the Normal Warm Wash, Water Saving program

3 YEAR MANUFACTURERS WARRANTY

Allergy UK

THE BRITISH ALLERGY FOUNDATION

SEAL OF APPROVAL

POWERED INVERTER

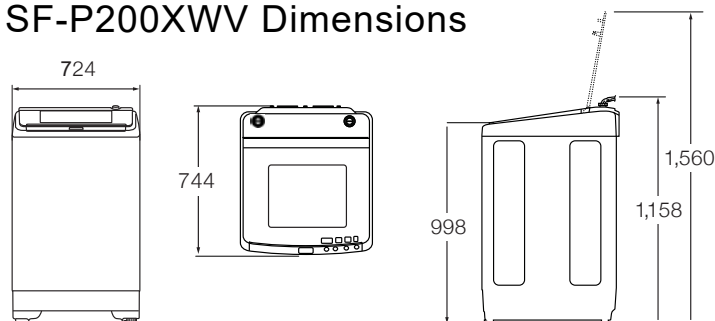
AUTO SELF CLEAN

## 3-Step Sensor

Laundry amount is detected in three steps to enable setting of the optimum washing conditions. In Step 1, the ideal amount of water and wash time for the load are decided, and even if wet clothes are mixed with dry clothes and the load is incorrectly detected, corrections are made in Step 2. Fabric type is detected and water flow and wash time are adjusted to match the load in Step 3.



## SF-P200XWV Dimensions



724mm (W) x 1,158mm (H) x 744mm (D)  
(Including drain hose and water supply hose).