

## LCD Projectors

Specifications					
Model name		CP-AX2503	CP-AX3003	CP-AX3503	CP-AW2503 CP-AW3003
Display system		3LCD			
Display device	Size of effective display area	0.63", aspect ratio 4:3			0.59", aspect ratio 16:10
	Number of pixels	786,432 pixels (1024 horizontal x 768 vertical)			1,024,000 pixels (1280 horizontal x 800 vertical)
Lens	Zoom	n/a (Digital zoom: x 1.35)			
	Focus	Powered			
Light source		225W	250W		
Screen size		60-100 inch			
Light output(Brightness)		2,700lm	3,300lm	3,600lm	2,700lm 3,300lm
Contrast ratio		5,000:1(full white/full black)			
Speaker		16W x 1 mono			
Displayable	Horizontal	15 - 106 kHz			
scanning frequency	Vertical	50 - 120 Hz			
Terminals	COMPUTER IN 1	Mini-D-sub 15-pin connector x 1			
	COMPUTER IN 2 / MONITOR OUT	Mini-D-sub 15-pin connector x 1			
	VIDEO	Composite video (RCA connector) x 1			
	HDMI IN	HDMI connector x 2 (HDCP compliant)			
	AUDIO IN	3.5mm stereo mini connector x 1, RCA connector L/R x 1			
	AUDIO OUT	3.5mm stereo mini connector x 1			
	Microphone Input	3.5mm mono mini connector x 1			
	CONTROL (RS-232C)	D-sub 9-pin connector x 1			
	LAN	RJ45 connector x 1			
USB-A	USB type A x 2 (PC less Presentation or wireless adapter)				
USB-B	USB type B x 1 (USB Display or USB mouse control)				
Operating temperature		0-40°C 35-40°C (The brightness of lamp is reduced automatically.)			
Operating humidity (RH)		20-80%RH (non-condensing)			
Power requirements		AC 100-120V (50/60Hz) : 3.3A AC 220-240V (50/60Hz) : 1.6A	AC 100-120V (50/60Hz) : 3.7A AC 220-240V (50/60Hz) : 1.8A		
Maximum power consumption		AC 100-120V/330W AC 220-240V/310W	AC 100-120V/360W AC 220-240V/350W		
Standby mode power consumption		0.35W at saving mode			
Standard outside dimensions (WxHxD)		377mm x 141mm x 360mm (14.8"x5.6"x14.2") 377mm x 136mm x 360mm (14.8"x5.4"x14.2") (Excluding protrusions)			
Weight		Approx. 4.3kg (9.5 lbs.)			
Accessories		Remote control, AA batteries, Power cord, Computer cable, Cable cover, Adapter cover, User's manuals, Security label, Application CD			

### Environment

- **Compliance with EU Directive RoHS<sup>\*1</sup>**
- **Reduction of resin usage in production**  
Use of hot runners in molds for making upper housing in order to reduce mill ends.
- **Reduction of CO<sub>2</sub> emissions**  
Carton volume has been cut down to 75%<sup>\*2</sup>, reducing CO<sub>2</sub> emissions during transport.
- **Power saving mode engaged during standby**
- **Eco mode**  
Eco mode provides power saving.

<sup>\*1</sup> RoHS is the acronym of "Directive 2011/65/EU of the European Parliament and of the Council of 8 June 2011 on the restriction of the use of certain hazardous substances in electrical and electronic equipment".  
<sup>\*2</sup> Compared to Hitachi CP-A100 ultra short throw projector on the basis of one carton box.

### —Design and specifications are subject to change without notice.

- The projected images and comparison photos in this catalog are simulations.
- LCD panels, polarizers and other optical components and cooling fans may need replacement after prolonged usage. For more details, please consult a Hitachi sales representative.
- Do not use in places where there is a lot of water, dampness, steam, dust, soot or tobacco smoke. This may result in fire or malfunction.
- Optical components (lamp, LCD panel, polarizing plate, PBS [polarizer beam splitter]) have limited service lives. They must be repaired or replaced if they are used for a long period of time.
- These projectors use a mercury lamp with high internal pressure. Because of its properties, this lamp may burst with a loud noise or burn out if struck or after it has been used for a period of time. The time until it bursts or burns out varies greatly according to differences between lamps and usage conditions. Turning the lamp's power on and off frequently shortens its service life.
- Optical components other than the lamp: If the projector is used for six hours or more per day, they may need to be replaced in less than a year.
- LCD panel: If the projector is used continuously for six hours or more, its replacement cycle may be shortened.
- Do not turn projector on again for ten minutes after shutdown. Neglect can shorten the lifetime of the lamp. During use and immediately after use, do not touch anywhere near the lamp and the vents as these parts are extremely hot.
- Windows®, Windows Vista® and Internet Explorer® are trademarks, or registered trademarks of Microsoft Corporation in the United States and/or other countries.
- Pentium® is trademark of Intel Corporation in the U.S. and/or other countries.
- Crestron® and Crestron RoomView® are registered trademarks of Crestron Electronics, Inc. in the United States and other countries.
- HDMI, the HDMI Logo, and High-Definition Multimedia Interface are trademarks or registered trademarks of HDMI Licensing LLC in the United States and other countries.
- ImageCare is a trademark or a registered trademark of Royal Philips in the United States and other countries.
- All other trademarks are the properties of their respective owners.

## HITACHI

Hitachi America, Ltd., Digital Media Division

Hitachi Home Electronics Asia (S) Pte. Ltd.

Hitachi Sales (Malaysia) Sdn. Bhd.

Hitachi Sales (Thailand), Ltd.

Hitachi (Hong Kong), Ltd.

Hitachi Sales Corp. of Taiwan

Hitachi Australia Pty Ltd.

Hitachi Europe Ltd., Digital Media Group Consumer Affairs Department Whitebrook Park, Lower Cookham Road, Maidenhead, Berkshire, SL6 8YA, UK Tel: +44-1628-585000 www.hitachidigitalmedia.com

Hitachi Maxell, Ltd.

2420 Fenton Street, Suite 200 Chula Vista, CA 91914, U.S.A. and Canada Tel: +1-800-225-1741 www.hitachi-america.us/digitalmedia

438A Alexandra Road #01-01/02/03, Alexandra Technopark, 119967, Singapore Tel: +65-6536-2520 www.hitachiconsumer.com.sg

Lot 12, Jalan Kemajuan, Bangi Industrial Estate, 43650 Bandar Baru Bangi, Selangor Darul Ehsan, Malaysia Tel: +60-3-8911-2670 www.hitachiconsumer.com.my

994, 996 Soi Thonglor, Sukhumvit 55 Road, Klongtonnua, Vadhana Bangkok 10110, Thailand Tel: +66-2335-5455 www.hitachi-th.com

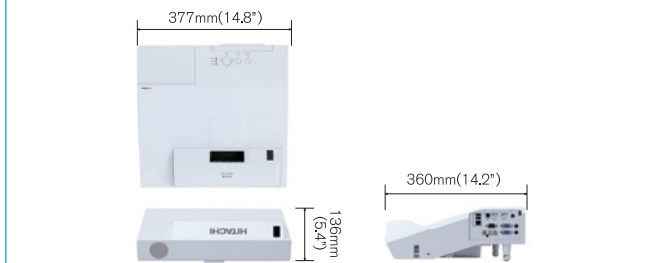
18th Floor, Ever Gain Centre, 28 On Muk Street, Shatin, N.T., Hong Kong Tel: +852-2113-8883 www.hitachi-hk.com.hk

2nd Floor, No.65, Nanking East Road, Section 3, Taipei 104, Taiwan Tel: +886-2-2516-0500 www.hsct.com.tw

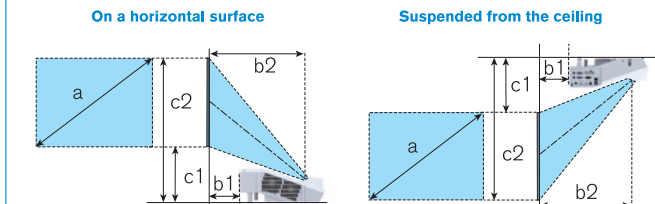
Suite 801, Level 8, 123 Epping Road, North Ryde NSW 2113, Australia Tel: +61-2-9888-4100 www.hitachi.com.au

292 Yoshida-cho, Totsuka-ku Yokohama, 244-0817, Japan http://www.hitachico.jp/proj/

### Dimensions



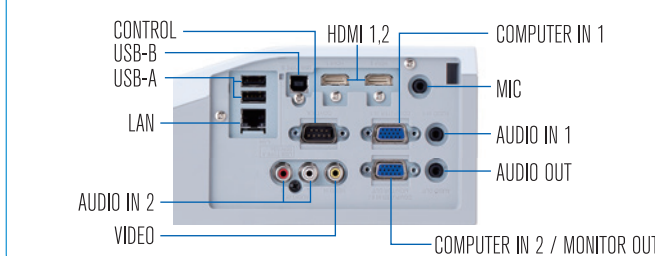
### Projection Distance



CP-AX2503,CP-AX3003,CP-AX3503 (1,024 x 768) (±8%)									
Screen size(diagonal)		Projection distance				Screen height			
a		b1		b2		c1		c2	
type (inch)	m	m	inch	m	inch	m	inch	m	inch
60	1.5	0.104	4.1	0.385	15.2	0.224	8.8	1.138	44.8
70	1.8	0.170	6.7	0.451	17.8	0.247	9.7	1.314	51.7
80	2.0	0.236	9.3	0.517	20.4	0.270	10.6	1.489	58.6
90	2.3	0.302	11.9	0.583	23.0	0.293	11.5	1.664	65.5
100	2.5	0.368	14.5	0.649	25.6	0.315	12.4	1.839	72.4

CP-AW2503,CP-AW3003 (1,280 x 800) (±8%)									
Screen size(diagonal)		Projection distance				Screen height			
a		b1		b2		c1		c2	
type (inch)	m	m	inch	m	inch	m	inch	m	inch
60	1.5	0.128	5.0	0.409	16.1	0.313	12.3	1.121	44.1
70	1.8	0.198	7.8	0.479	18.9	0.351	13.8	1.293	50.9
80	2.0	0.268	10.5	0.549	21.6	0.388	15.3	1.465	57.7
90	2.3	0.338	13.3	0.619	24.4	0.426	16.8	1.638	64.5
100	2.5	0.408	16.1	0.689	27.1	0.464	18.3	1.810	71.3

### Terminals



## Ultra Short Throw LCD Projectors

**HITACHI**  
Inspire the Next



Ultra short throw projectors capable of providing vivid images in bright classrooms and meeting rooms

\*Projected images are simulations

CP-AX2503

CP-AX3003

CP-AX3503

CP-AW2503

CP-AW3003





# Project visual beauty in real time. Technology that delivers details in bright environments.

Hitachi's original image processing technology enhances high-definition video in real time\*. Using this technology, you can enjoy high-definition images without losing the color information of the original image, and project high-definition video in classrooms, lecture halls, large meeting rooms, and other bright spaces.

\*1,920x1,200pixels at 60fps



## HDCR (High Dynamic Contrast Range)

When average projectors are used in bright rooms, the darker colors of an image deteriorate and images become unclear. Using this function, blurred images caused by room lighting or outside light sources are corrected, and an effect similar to increasing contrast occurs. This results in clear images even in bright rooms.

\* Comparison photos are simulations.

Dark room

HDCR OFF



Bright room

HDCR OFF



HDCR ON



Dark parts are obscure.


Dark parts are clear. (Distinct)

### HDCR + ECO Mode

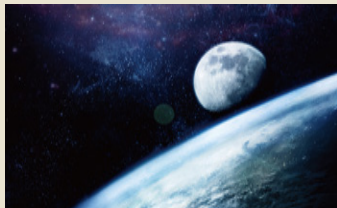
Turning HDCR ON and activating ECO Mode achieves a brightness with a look and feel close to Normal Mode while suppressing lamp brightness to the ECO Mode level and cutting electricity consumption up to approximately 30%. This results in clear images even at Normal mode.

\* Comparison photos are simulations.

HDCR OFF + ECO Mode



HDCR ON + ECO Mode



The entire image appears dark.

Dark parts of the image are clear.

## ACCENTUALIZER

Hitachi original technology makes pictures look more real by enhancing (1) Shade, (2) Sharpness and (3) Gloss to make pictures as clear as pictures on a flat-panel device. You can also adjust the effects by three levels according to your surroundings so that the colors of projected images are the actual colors of the objects they represent.

\* Comparison photos are simulations.

ACCENTUALIZER OFF



ACCENTUALIZER ON



Original image

Increased Shade, Sharpness, and Gloss


## DICOM® Simulation Mode

The DICOM (Digital Imaging and Communications in Medicine) Simulation Mode projects grayscale images which approximate DICOM Part 14 specifications. This mode is ideal for viewing grayscale medical images, such as X-rays, for training and educational purposes.


The projectors have a DICOM (Digital Imaging and Communications in Medicine) Simulation Mode. This mode simulates the DICOM standard, which is a standard applicable to digital communications in medicine, and is useful for displaying medical images such as X-rays. These projectors are not medical devices and are not compliant with the DICOM standard, and neither the projector nor the DICOM Simulation Mode should be used for medical diagnosis.

\* Comparison photos are simulations.

Normal Mode



DICOM Simulation Mode



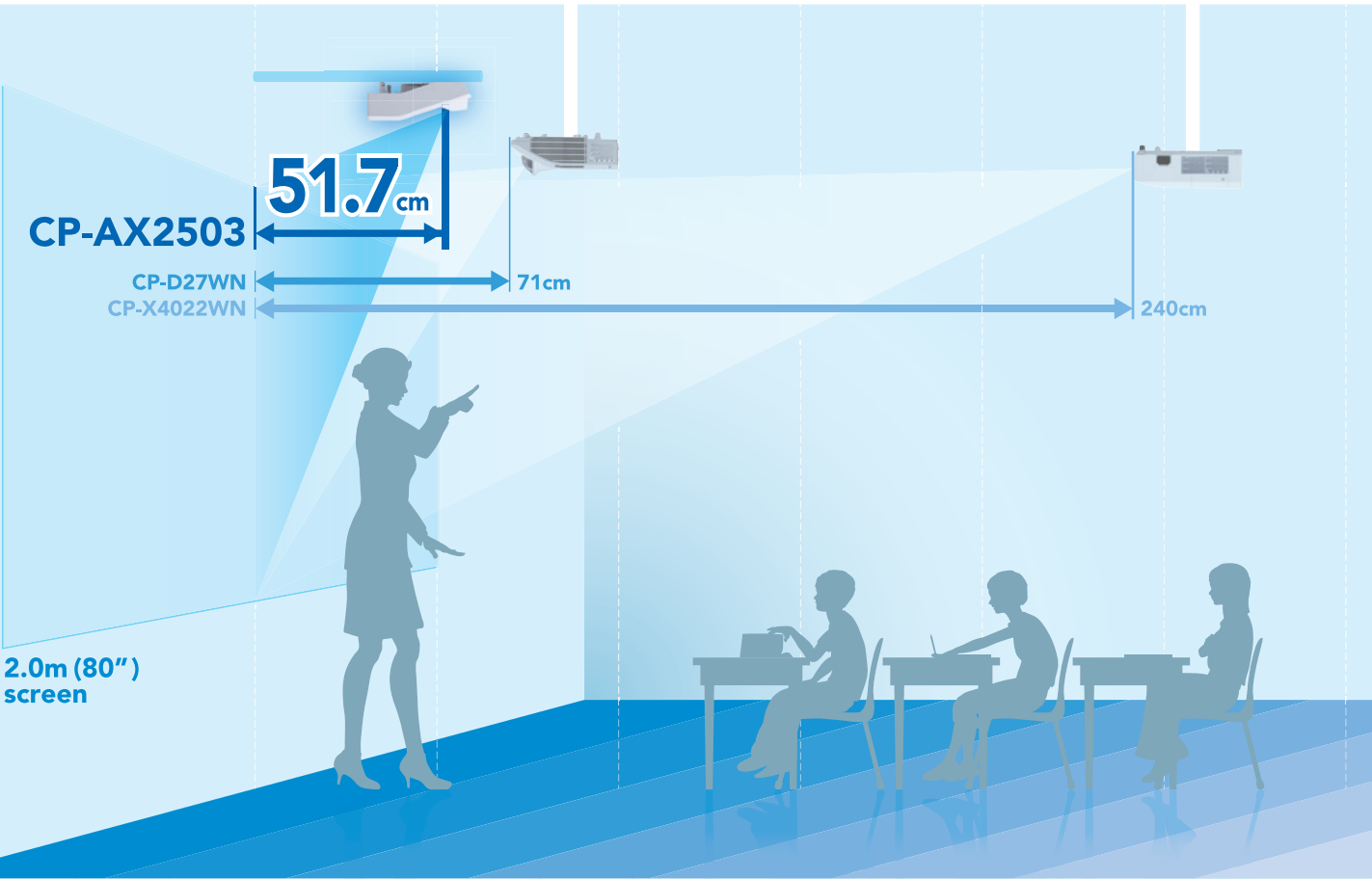
Normal Mode

DICOM Simulation Mode

\* The above images are representations of the effects and differ from actual images.



# Various Installability and System Features for Various Uses



## Reduced Glare and Shadows

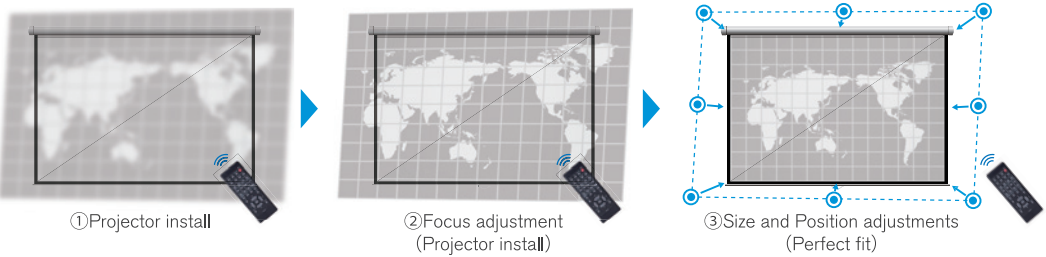
These projectors feature Ultra Short Throw, for projecting a 2m(80 inches) image from only 51.7cm(20.4inches) \* onto a wall or screen. Ultra Short Throw greatly reduces glare form the projector's light source, making it easier for the teacher or presenter to see the

audience. The audience also has a clearer view because the shadows of the teacher's or presenter's hands and body are minimized. The result is a better classroom or meeting room experience for everyone.

\* For CP-AX2503/CP-AX3003/CP-AX3503. CP-AW2503/CP-AW3003 are 54.9cm(21.6inches).

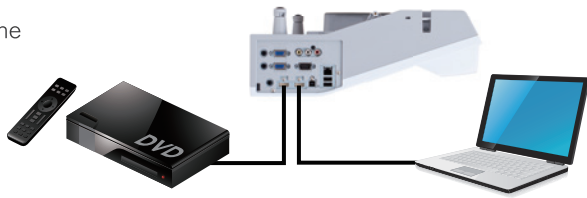
## Powered Focus and Perfect fit

Equipped with powered focus and Perfect fit with which the position of four corners and four sides of a projected image can be adjusted. With the remote controller at hand, you can adjust focus and the position of an image.



## 2 HDMI input

Equipped with 2 terminals for the current widely-used interface.

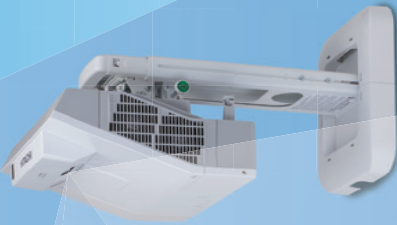


## 16W Internal Speaker

Equipped with a 16W speaker and microphone terminal that allow you to comfortably make presentations using content with sound or using a microphone.

## Front Use

In multifunction spaces, meeting rooms, and other places where mounting on a wall or ceiling is not possible, you can place the projector on a desk or on the floor to quickly and easily project an image 60 to 100 inches.



## Wall Mount Use

The wall mount unit (HAS-WN03)(option) ensures that the projector can be installed in exactly the right position. The entire unit slides horizontally, and fine adjustments can be made to each axis independently.

Do not attempt to install the projector yourself. Have your dealer or service center handle all installation work.



Optional wall mount unit



## Tabletop Use

The optional tabletop use kit (TT-03) (option) allows the projector to be used vertically. You can project a 1.5m(60")\* image down onto a table.

## Optional tabletop use kit

Easily install the projector using 4 screws.



\* For CP-AW2503/CP-AW3003, CP-AX2503/CP-AX3003/CP-AX3503 are 1.6m (63.5").





## Various Network Features

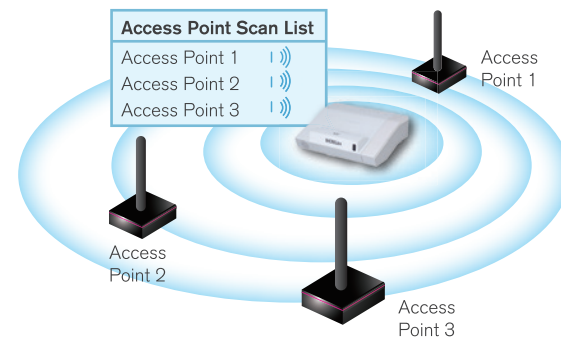
### Wireless Capability (Option)

Connect a projector to a computer using the optional USB wireless adapter. The adapter supports IEEE802.11 b/g/n.



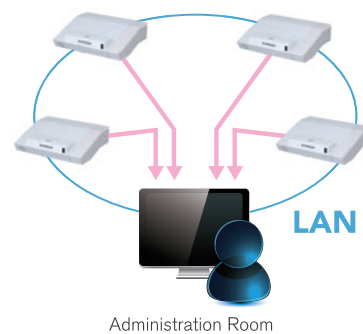
### Easy WLAN Connection

Searches available wireless networks and displays the list of SSIDs when used in Infrastructure mode. You can select an SSID to connect to from the list.



### Convenient Networking

Manage and control multiple projectors over your LAN with Centralized Reporting, Scheduling, E-mail Alerts, and My Image (Image Transfer).



### Easy Schedule Setting

Schedule functions can be operated automatically by setting up this menu.

EVENT SCHEDULE		
MONDAY to FRIDAY		
08:00	POWER	ON
	INPUTSOURCE	COMPUTER IN 1
12:30	INPUTSOURCE	HDMI 1
17:00	POWER	OFF

### Smart Device Control

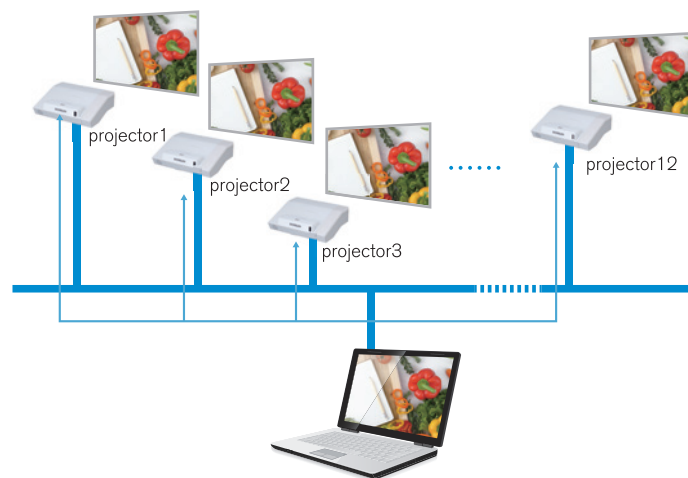
Plugging the USB wireless adapter to the projector and using the dedicated free online application developed by Hitachi, projectors can be controlled from a tablet or smartphone.



\* See the Hitachi website for details [http://www.hitachi.co.jp/proj/en/apps/pj\\_connection.html](http://www.hitachi.co.jp/proj/en/apps/pj_connection.html)

### Multi Projector

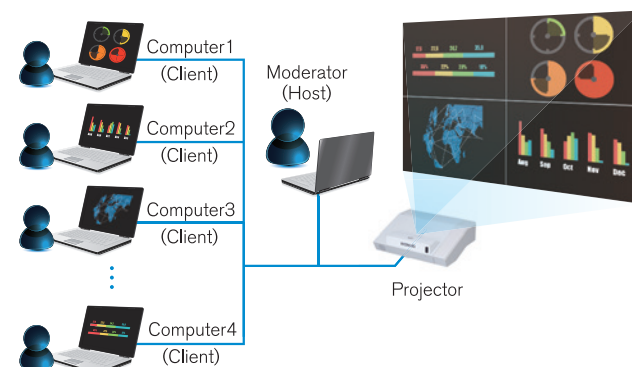
You can project the same image to up to 12 projectors simultaneously. This is useful for meetings and lectures in large venues where a single screen would not be sufficient.



### Moderator Control Mode

Setting one computer from the multiple computers (up to 50) that are connected to the projector as the moderator (host) makes it possible for the moderator to project from all the computers (Clients).

\* Moderator Control Mode supports LiveViewer 6 (Windows application) only.



# Aseries

Ultra Short Throw

**CP-AW2503**  
WXGA 2,700lm

**CP-AW3003**  
WXGA 3,300lm

**CP-AX2503**  
XGA 2,700lm

**CP-AX3003**  
XGA 3,300lm

**CP-AX3503**  
XGA 3,600lm

## ECO

ImageCare

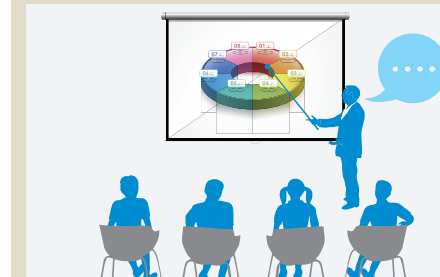
### Saver Mode

This feature developed by Hitachi reduces the projector lamp brightness and consumption power, resulting in considerable energy savings. Set the Saver mode time from 1 to 30 minutes, and if the projected image does not change in that time, Saver mode activates. Saver mode can also be activated manually.

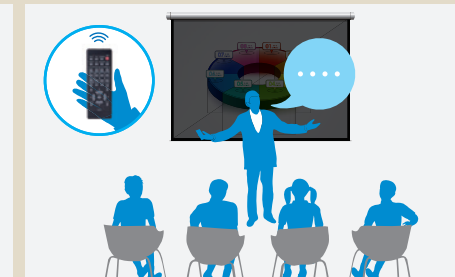
### Intelligent Eco Mode

This feature developed by Hitachi automatically changes the brightness of the lamp according to the level of the input signal. Lamp brightness is reduced when a darker image is projected, and returns to normal when a brighter image is projected, eliminating unnecessary energy consumption from the lamp.

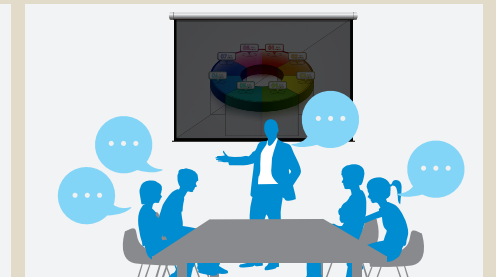
### Saver Mode



During a presentation using the screen.



Turn dark the screen with the remote control while the presenter speaks.



The screen automatically turns dark when not in use during group discussions.

## Ensuring High Reliability and Stability

### Easy Maintenance

The Hybrid Filter has an electrostatic design with hybrid protection filter layers, protecting the optics from dust, dirt and chalk particles. It also has a longer life than previous filters, so the projector requires less frequent maintenance.



### Hybrid Filter

The Hybrid Filter requires less frequent maintenance and cleaning, making longer operation possible.



### 3LCD chips with Inorganic Alignment Layers

These Hitachi 3LCD projectors incorporate three LCD panels with inorganic alignment layers that are extremely light resistant, increasing brightness and contrast ratio. They ensure smooth images and high reliability.

