

# **U-Pointer (Mac computer)**

## **User Manual**

**Displayed images from projector become an interactive whiteboard with U-Pointer**

U-Pointer enables interactive operation without a dedicated board such as the operation on the connected computer or writing on the display with the sensor equipped in the projector and bundled interactive pen.

# Contents



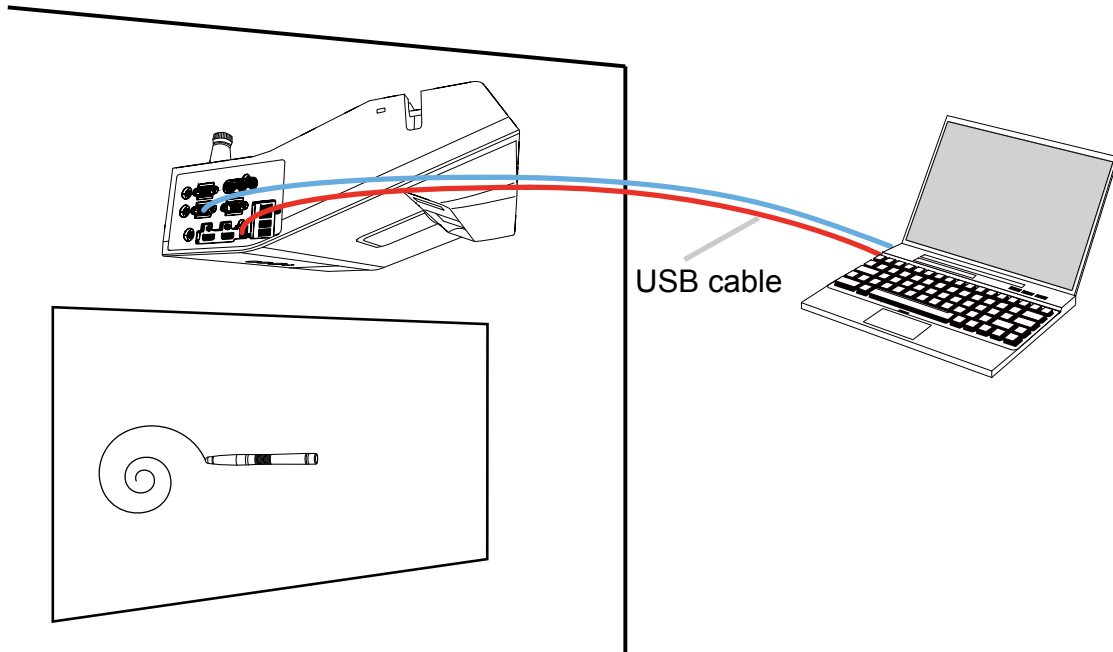
Connecting the projector and PC -----	03
Driver Installation -----	04
Running the U-Pointer -----	06
Configuration Setting -----	08
- The U-Pointer Configuration -----	08
- Alignment View -----	09
- Calibration -----	10
Pen Action -----	11
Specifications -----	12
Troubleshooting -----	12

- NOTE** • The information in this manual is subject to change without notice.
- The illustrations in this manual are for illustrative purposes. They may differ slightly from your product.
  - The manufacturer assumes no responsibility for any errors that may appear in this manual.
  - The reproduction, transfer or copy of all or any part of this document is not permitted without express written consent.


# Connecting the projector and PC

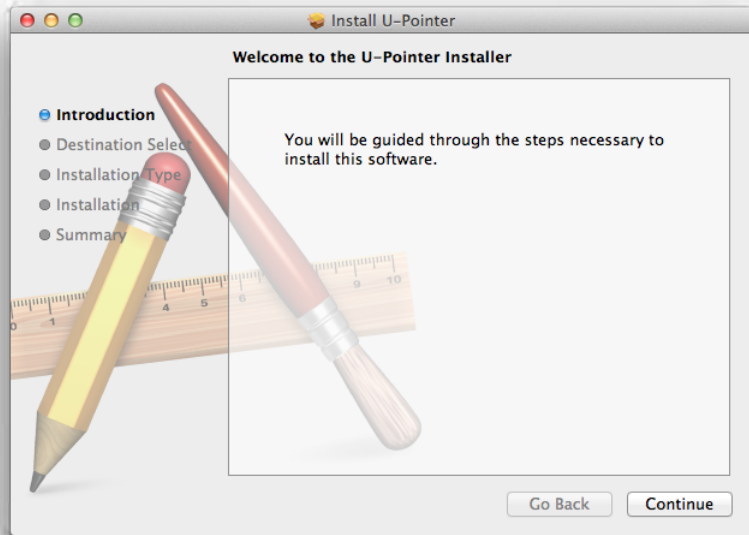
Use the USB cable to connect the projector and PC.

After you start the PC, please power on the projector.

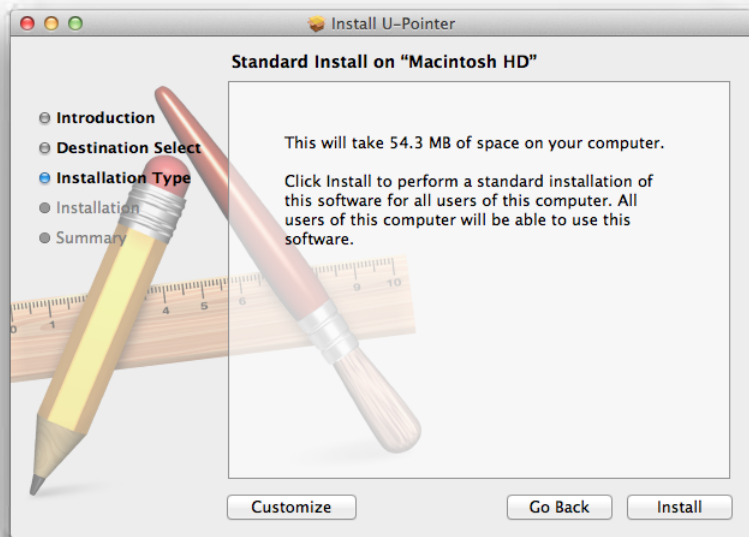


# Driver Installation

When you double-click DVD Drive's  UP\_HM > osx > U\_Pointer\_HM > U-Pointer Setup.pkg file, installation will proceed.



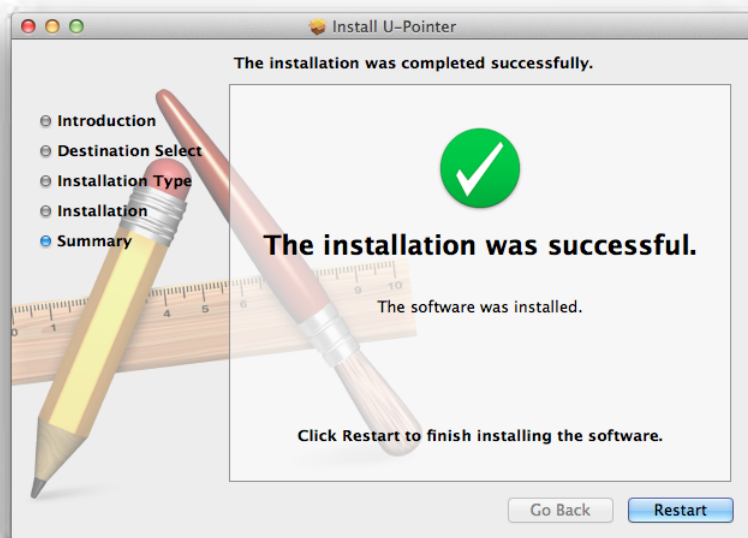
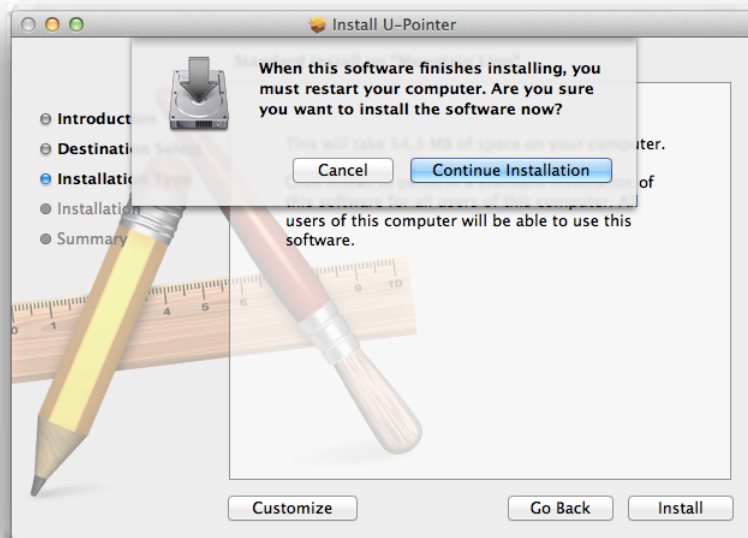
Please, click "Continue" button after checking installation information.



Please, click "Install" button after checking the available memory space for installation.



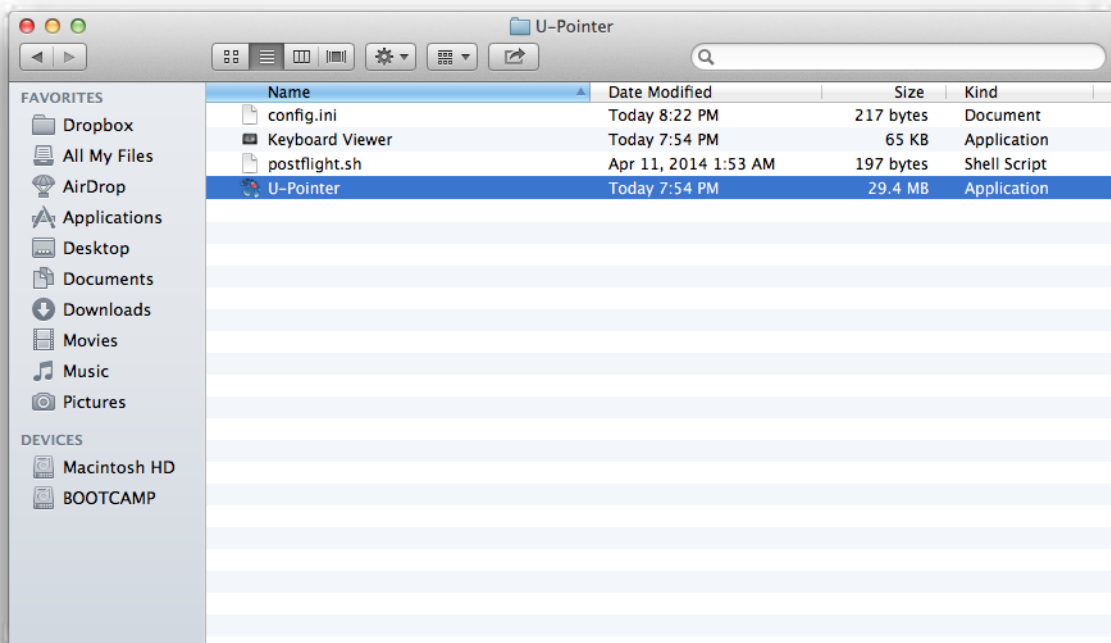
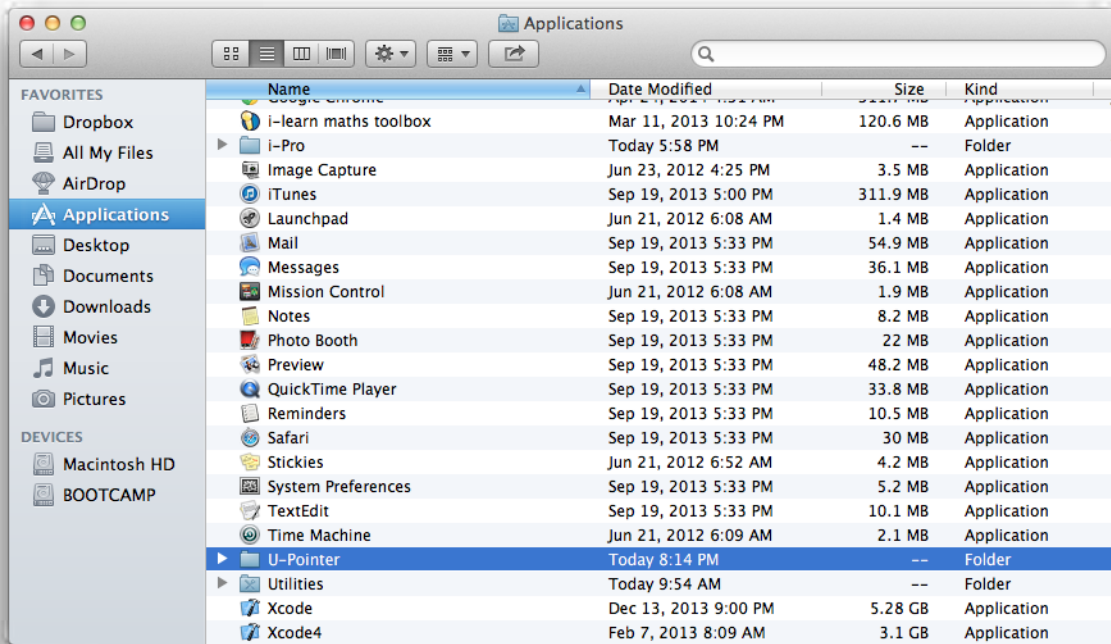
Please enter the password for authority.



The installation is completed. Please click "Restart" button.

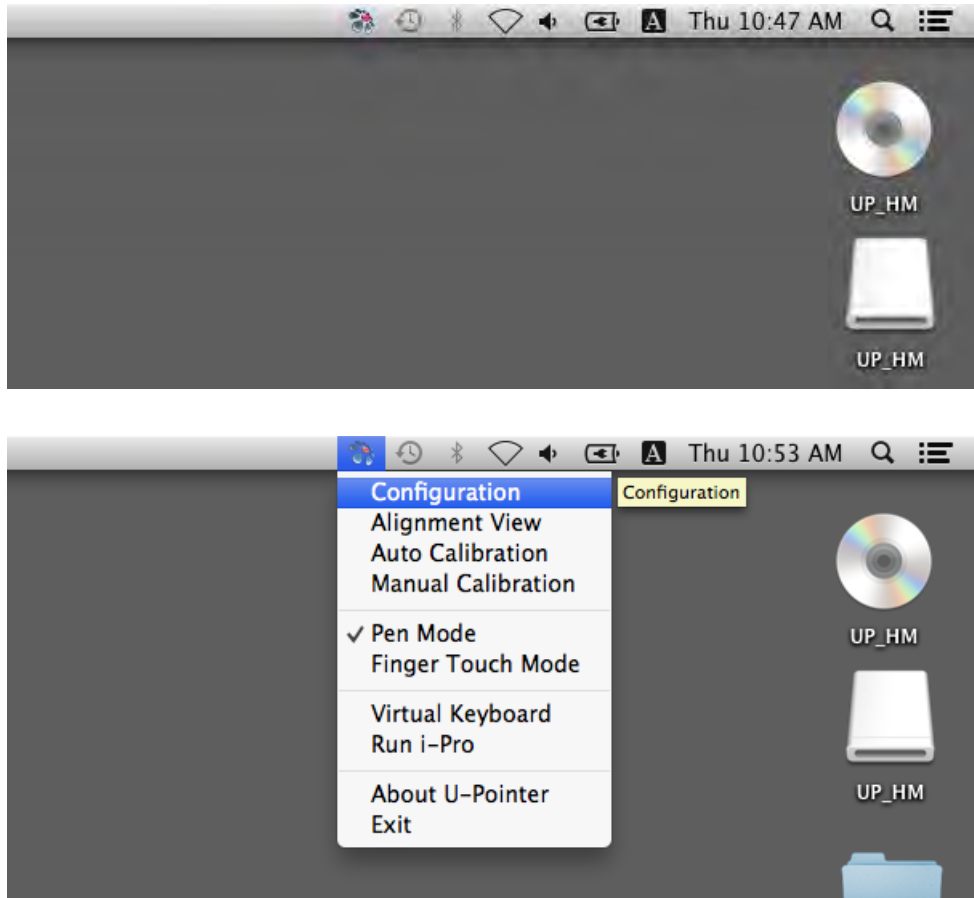
# Running the U-Pointer

Double-click on the line of U-Pointer in Application to execute.



## After the installation is finished

- When running the U-Pointer, the U-Pointer icon appears on the system tray area.
- Click the U-Pointer icon in system tray area and a popup menu will appear.



**Configuration** : Choose this when you want to change the installation position of the projector or to change the language.

**Alignment View** : See “Alignment View” on page 9 for details.

**Auto Calibration** : If the accuracy is not enough when using the U-Pointer, execute the auto calibration again.

**Manual Calibration** : If the accuracy is not enough when using the U-Pointer or the auto calibration fails, execute the manual calibration.

**Pen Mode** : Writing and touch are possible in this mode with Interactive pen included in a product.

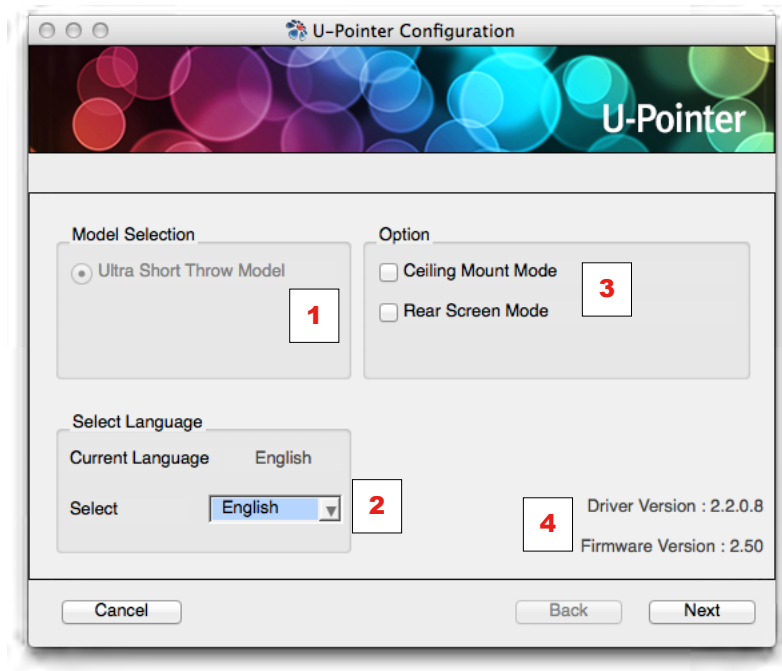
**Finger Touch Mode** : Finger Touch and writing are possible with Finger Touch Unit as an option.

**Virtual Keyboard** : If keyboard input is necessary, click the “Virtual Keyboard” and then keyboard will appear on the screen.

**Run i-Pro** : Choose this when you want to run the “i-Pro”.

**About U-Pointer** : This menu provides the U-Pointer version information. Click this menu, and then version information window will appear.

# Configuration Setting



## The U-Pointer Configuration

To use the U-Pointer, the proper setting of the U-Pointer configuration is necessary. The Configuration setting window will help you to set up U-Pointer correctly.

**1. Model Selection** : Selected by default.

**2. U-Pointer Language** : The default language is the same as the language for your operating system. If you want to change the language, click on the arrow and then language list will display. After selecting your preferred language, quit the U-Pointer and start the U-Pointer again.

**3. U-Pointer Option** :

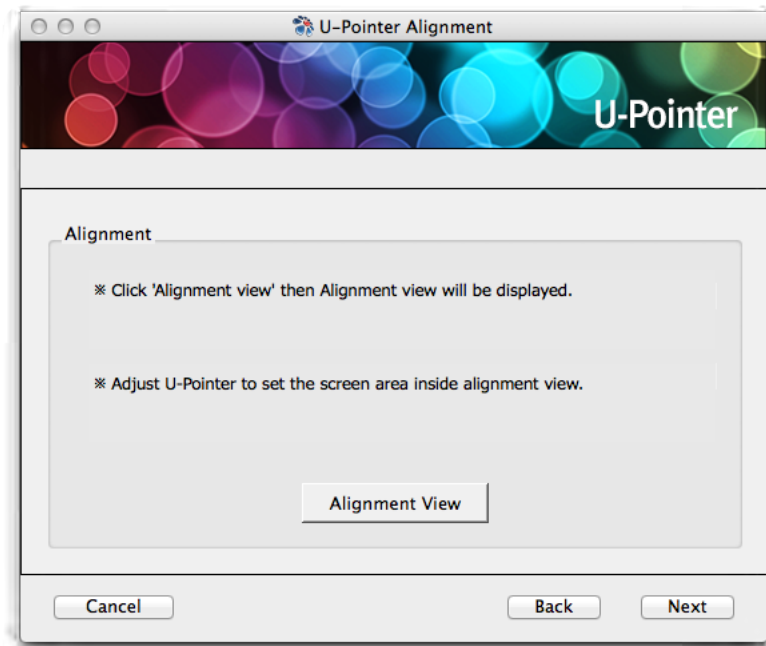
- Ceiling Mount Mode : Click this item if you mount the projector on the ceiling.  
When the projector is placed on the table, do not click this item.
- Rear Screen Mode : If the projector is installed on the rear screen system, click this item.

**4. U-Pointer Version** : Displays U-Pointer version.



## Alignment View

The U-Pointer Alignment function is to set the orientation of the U-Pointer to the screen.

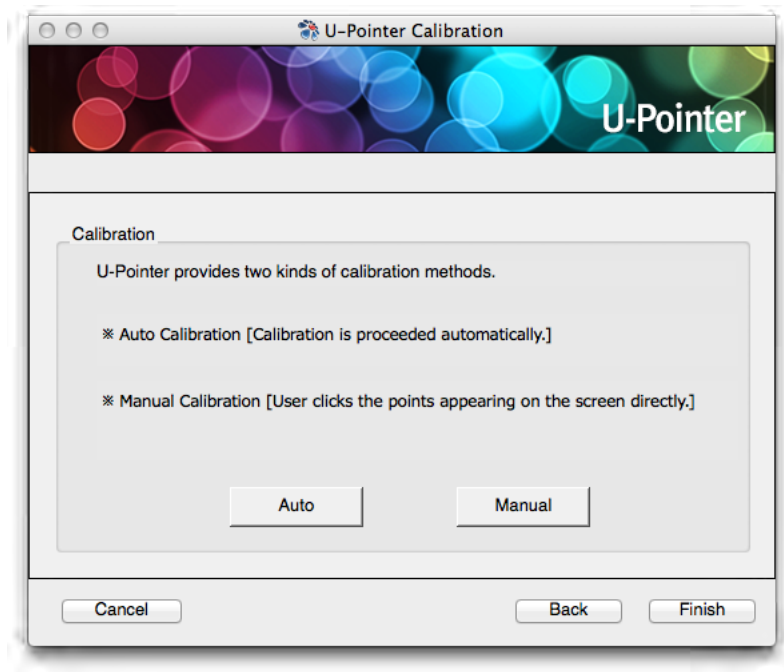


**Alignment View** : When clicking the "Alignment View", the screen image is displayed on the alignment view as illustrated.

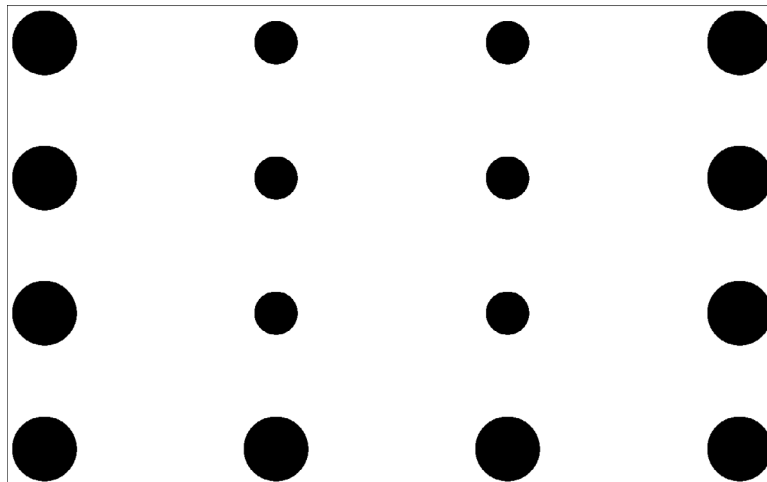


## Calibration

U-Pointer provides two kinds of calibration methods, auto calibration and manual calibration.



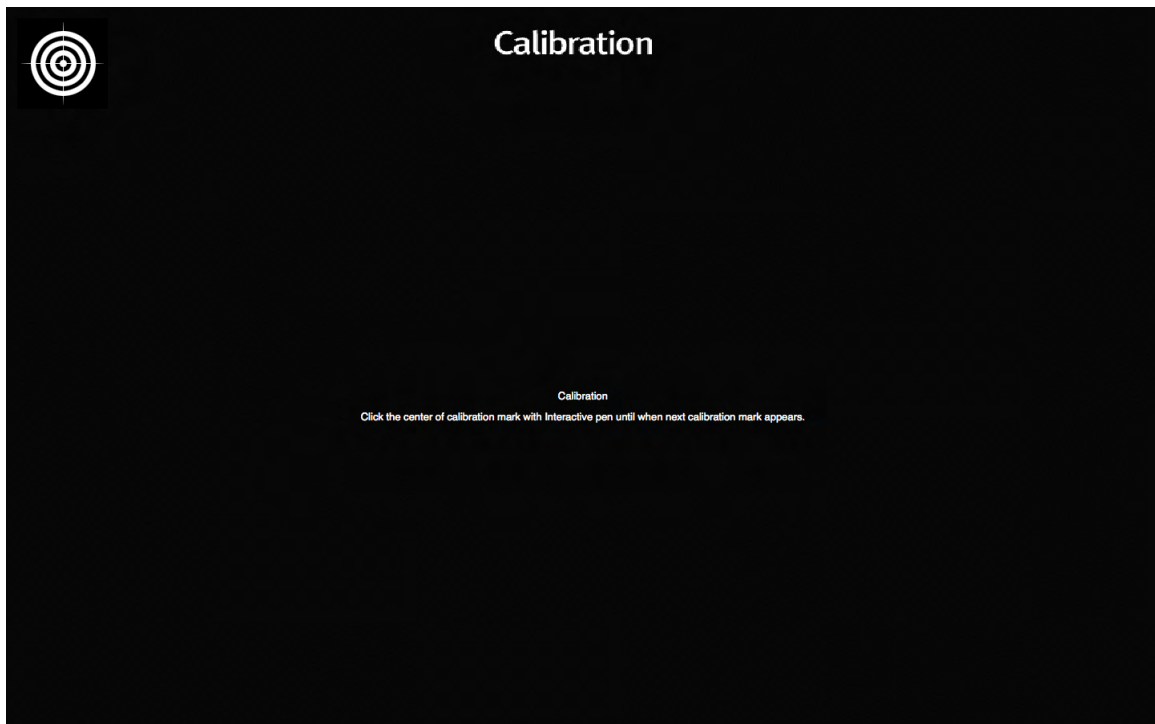
**Auto calibration\*** : click "Auto" and the calibration process will run automatically.



When you choose this method, white image is shown on the screen and the pattern image is displayed.

\* Due to excessive ambient light, auto calibration may fail or the accuracy level may drop.  
In this case, please execute the manual calibration.

**Manual calibration** : click "Manual" and the calibration window will be projected on the screen. Use the Interactive pen to click the center of calibration cursor immediately after it appears. Then the next cursor will display. Repeat this process until the last calibration cursor disappears.



## Pen Action

The Interactive Pen provides the following 4 actions:

- Click** : Touch an icon or a menu on the screen.
- Double Click** : Touch an icon or a menu on the screen two times.
- Right Button Click** : Touch an icon or menu for at least 1.5 seconds.
- Drag** : Touch and drag an object on the screen.

# Specifications

U-Pointer	
Technology	Image Processing Technology
Refresh Rate	60fps
Response Time	16.7ms
Auto Calibration	Yes
Operating Distance	Follow Projector Specification
Multiple Operation	2 (Dual)
Supported OS	OSX 10.6

## Troubleshooting

### 1. The Interactive pen doesn't operate as mouse on the screen after calibration.

- **Check the connection is correct.**

- Check the projector is correctly connected to computer via USB cable.
- Check the USB device is detected by computer.

- **USB signal is not stable.**

- If you're using a notebook PC, please connect with AC power.

- **The interference appears on the screen which impacts Interactive pen's usage.**

- Remove extra USB devices (ex.USB reader) from the computer.
- Remove the infrared devices like remote control and infrared microphone in front of the screen.
- Re-connect USB cable and calibrate again.

### 2. The Pen doesn't work when drawing.

- Avoid any obstruction on the path of the camera view.
- Check the battery power of the pen.

### 3. Auto calibration fails.

- **Check the environment.**

- If there is ambient bright light directly to the screen, please use manual calibration to calibrate.

- **Check the resolution is the same between PC and projector.**

- **Check the projector focus. If it is not good, please adjust focus.**

## Precautions for settings and functions of U-Pointer

Function	OSX
Virtual keyboard usage	- Following setting is necessary to use virtual keyboard. "System Preferences" → "Keyboard" → Check "Show Keyboard & Character Viewers in menu bar"
Setting of U-Pointer	- Rebooting the system is necessary after setting U-Pointer.
Execute menu of i-Pro	- To activate "Run i-Pro" menu in U-Pointer, need to install i-Pro first and then install U-Pointer later. - At U-Pointer execution, if i-Pro is not installed, "Run i-Pro" menu becomes invalid. ⇒ In this case, quite U-Pointer after installing i-Pro and then reboot.
Usage of U-Pointer Dual Screen	- Need to plug 2 devices first, then execute U-Pointer.