

## CHANGEABLE LED UNIT LUMINAIRE

### Surface Mounted



Inverted Peak Type



Trough Type

### Recessed



Built-in Hole Width 220mm Type

### ■ Surface Mounted

Inverted Peak Type  
Trough Type

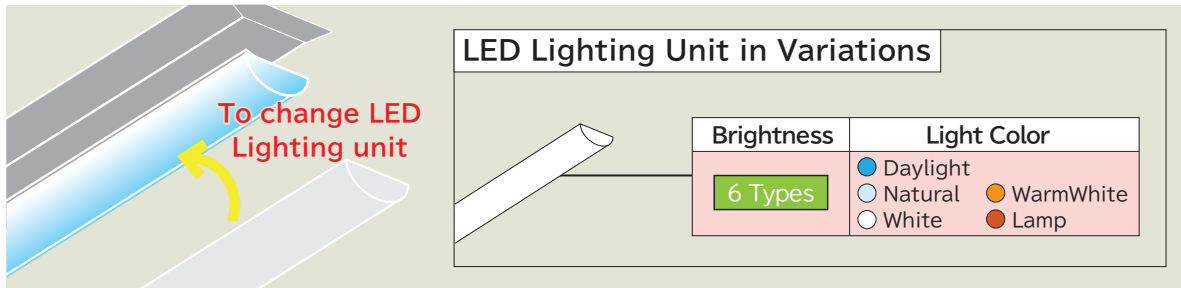
### ■ Recessed

Built-in Hole Width 220mm Type

1. Changeable LED lighting unit  
Available in multiple colors and  
brightness options
2. Original Hitachi developed  
technology  
Simple, hassle free installation  
and removal
3. Light all the way to the edge  
Appears in line when connected

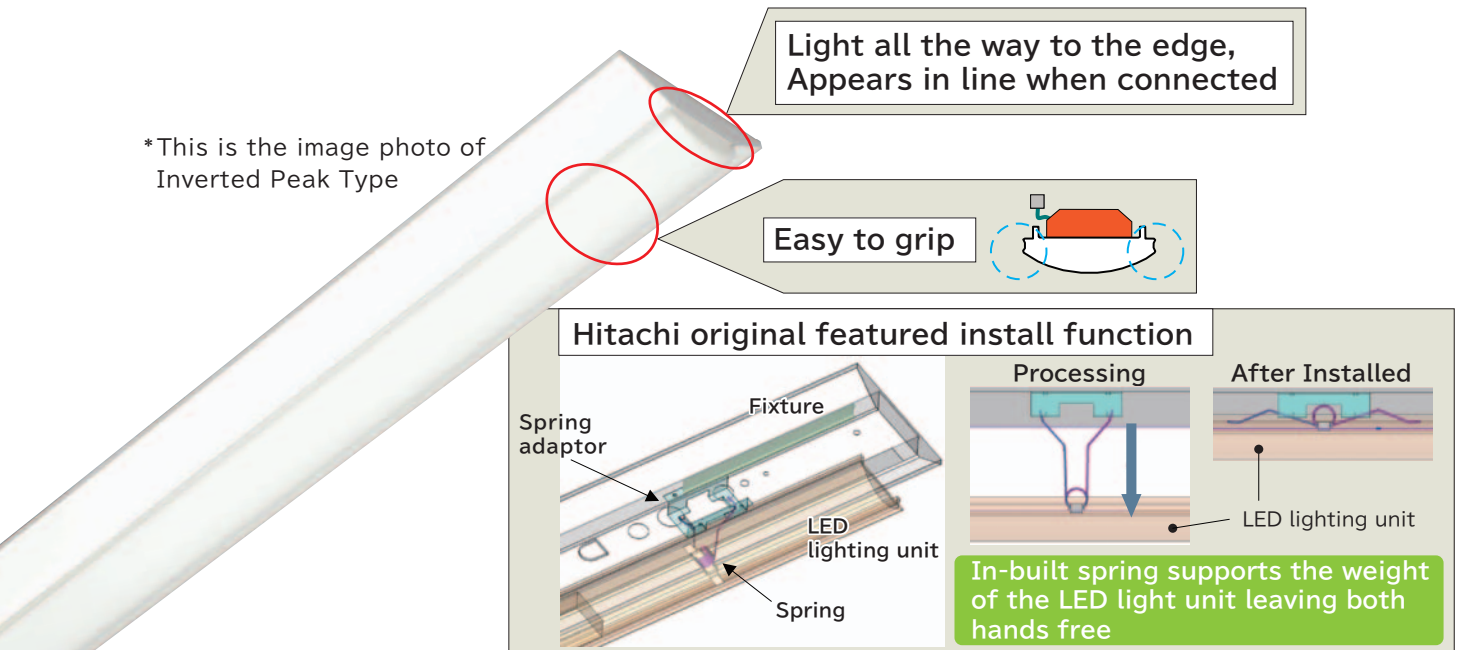
# 1. LED Lighting unit can be replaced independently meaning there is no need to remove the entire light fixture Becomes possible to change color and brightness to suit the desired ambience of each space

By changing only the LED lighting unit, it's possible to customise the brightness and color to the desired ambience of the specific space and this achieves increased efficiency. This lighting choice offers unparalleled versatility and flexibility in instances such as changing the floor layout and lighting to match.

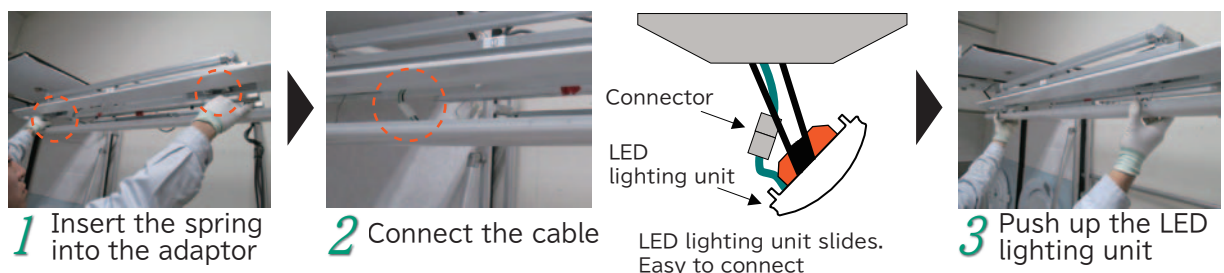


# 2. Hassle free installation or removal

Our original developed technology makes it very simple to install and remove.



## How to Install LED Lighting Unit



\*Drawings and images herein are all for your references.

# Reference Table

Fixture		LED Lighting Unit			Line up	
Surface Mounted	Inverted Peak Type	2 Types	7,200 lm Initial Illumination Correction, Dimming	<ul style="list-style-type: none"> <li><span style="color: blue;">●</span> Daylight</li> <li><span style="color: lightblue;">●</span> Natural</li> <li><span style="color: white;">○</span> White</li> <li><span style="color: orange;">●</span> WarmWhite</li> <li><span style="color: red;">●</span> Lamp</li> </ul>	30 Types	60 Types
	Trough Type		5,500 lm Initial Illumination Correction			
4,250 lm Initial Illumination Correction						
3,600 lm Initial Illumination Correction, Dimming						
2,750 lm Initial Illumination Correction						
2,100 lm Initial Illumination Correction						
Recessed	Built-in Hole Width 220mm Type	1 Type	7,010 lm Initial Illumination Correction, Dimming	<ul style="list-style-type: none"> <li><span style="color: blue;">●</span> Daylight</li> <li><span style="color: lightblue;">●</span> Natural</li> <li><span style="color: white;">○</span> White</li> <li><span style="color: orange;">●</span> WarmWhite</li> <li><span style="color: red;">●</span> Lamp</li> </ul>	30 Types	30 Types
			5,350 lm Initial Illumination Correction			
			4,140 lm Initial Illumination Correction			
			3,500 lm Initial Illumination Correction, Dimming			
			2,680 lm Initial Illumination Correction			
			2,040 lm Initial Illumination Correction			
<b>3 Types</b>		<b>60 Types</b>			<b>90 Types</b>	

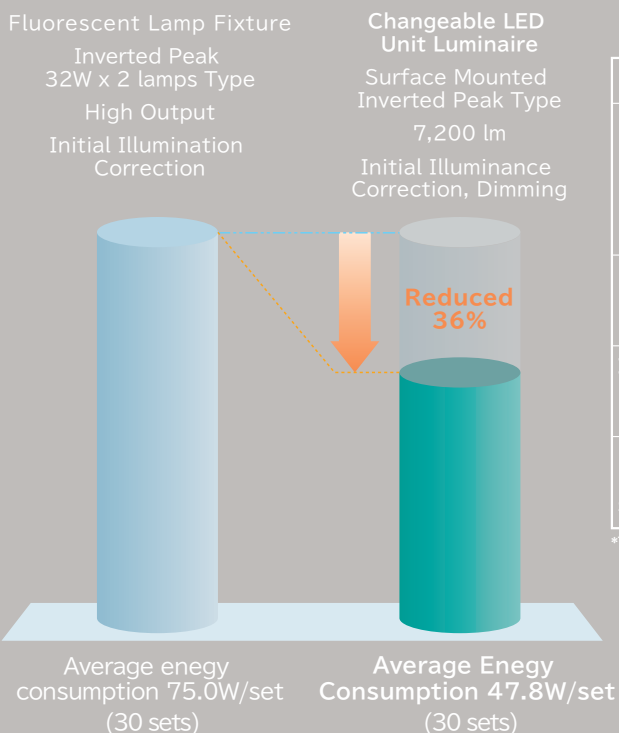
## Comparison of the Energy Consumption with Conventional Fluorescent Lamps

To Compare the Fluorescent Lamp 32W x 2 lamps High Output Type

Compare to conventional fluorescent lamp fixture, it can save 36% energy.

### Energy Consumption Comparison

**Energy Saving**  
**36% approx**



	Fluorescent Lamp Fixture	Changeable LED Unit Luminaire
	Inverted Peak 32W x 2 lamps Type High Output Initial Illumination Correction	Surface Mounted Inverted Peak Type 7,200 lm Initial Illuminance Correction, Dimming
Quantity (Sets)	30	30 <b>Same with Fluorescent's</b>
Input Power* (W/Set)	75.0	47.8 <b>Energy Saving 36%</b>
Life of lighting source (h)	12,000	40,000 <b>3 Times Longer</b>

\*This is the average figures in changing electric power by Initial Illuminance Correction.

## Specifications (Surface Mounted)

### Inverted Peak Type

Ordering Code: NC4A

Light Source Color: Natural (Color temperature: 5,000K) Ra: 85 Rated Input Voltage: 100 to 242V

Fixture Dimension: Total Length 1,250mm, Width 160mm, Height 50mm Weight: 2.4kg

Brightness Class	LED Lighting Unit		Fixture Performance			
	Models	Lighting System	Rated Luminous flux(lm)	Input Power(W)	Average Wattage(W)	Efficiency (lm/W)
7,200 lm	CE407NA-JX14	Initial Illumination Correction, Dimming	7,200	51.4	47.8	140.1
5,500 lm	CE405NA-J14	Initial Illumination Correction	5,500	39.2	36.5	140.3
4,250 lm	CE404NA-J14	Initial Illumination Correction	4,250	30.7	28.6	138.4
3,600 lm	CE403NA-JX14	Initial Illumination Correction, Dimming	3,600	26.5	24.6	135.8
2,750 lm	CE402NA-J14	Initial Illumination Correction	2,750	20.6	19.2	133.5
2,100 lm	CE402NB-J14	Initial Illumination Correction	2,100	16.6	15.4	126.5

### Trough Type

Ordering Code: PC4A

Light Source Color: Natural (Color temperature: 5,000K) Ra: 85 Rated Input Voltage: 100 to 242V

Fixture Dimension: Total Length 1,250mm, Width 73mm, Height 50mm Weight: 1.9kg

Brightness Class	LED Lighting Unit		Fixture Performance			
	Models	Lighting System	Rated Luminous flux(lm)	Input Power(W)	Average Wattage(W)	Efficiency (lm/W)
7,200 lm	CE407NA-JX14	Initial Illumination Correction, Dimming	7,200	51.4	47.8	140.1
5,500 lm	CE405NA-J14	Initial Illumination Correction	5,500	39.2	36.5	140.3
4,250 lm	CE404NA-J14	Initial Illumination Correction	4,250	30.7	28.6	138.4
3,600 lm	CE403NA-JX14	Initial Illumination Correction, Dimming	3,600	26.5	24.6	135.8
2,750 lm	CE402NA-J14	Initial Illumination Correction	2,750	20.6	19.2	133.5
2,100 lm	CE402NB-J14	Initial Illumination Correction	2,100	16.6	15.4	126.5

## Specifications (Recessed)

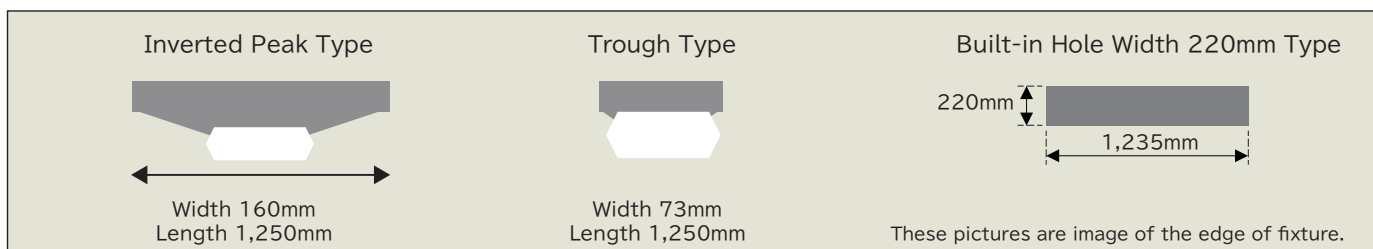
### Built-in Hole Width 220mm Type

Ordering Code: TC4B

Light Source Color: Natural (Color temperature: 5,000K) Ra: 85 Rated Input Voltage: 100 to 242V

Fixture Dimension: Total Length 1,251mm, Width 250mm, Height 37mm Weight: 3.4kg

Brightness Class	LED Lighting Unit		Fixture Performance			
	Models	Lighting System	Rated Luminous flux(lm)	Input Power(W)	Average Wattage(W)	Efficiency (lm/W)
7,010 lm	CET407NA-JX14	Initial Illumination Correction, Dimming	7,010	51.4	47.8	136.4
5,350 lm	CET405NA-J14	Initial Illumination Correction	5,350	39.2	36.5	136.5
4,140 lm	CET404NA-J14	Initial Illumination Correction	4,140	30.7	28.6	134.9
3,500 lm	CET403NA-JX14	Initial Illumination Correction, Dimming	3,500	26.5	24.6	132.1
2,680 lm	CET402NA-J14	Initial Illumination Correction	2,680	20.6	19.2	130.1
2,040 lm	CET402NB-J14	Initial Illumination Correction	2,040	16.6	15.4	122.9



\*Input power, average wattage, efficiency rating shown on the specification are the figures under the condition 200V.

\*The average wattage above is shown based on the average fluctuation of electric power.

\*The nature of LED elements may cause colors and brightness of individual units to vary slightly.

\*The life of LED lighting units contained in this document are calculated based on specific ambient temperature.

The life time would alter depending on the ambient temperature and pattern of use within each unique operating environment.

The life time shown refers to the LED module. The life time of the fixture itself would be 8 to 10 years, common to most other lighting fixtures. It can't change only LED modules.

The contents and specifications may be going to change without notice.

**Hitachi Appliances, Inc.**

Distributed in Australia by: ANL Lighting  
5/97 Lewis Road  
Wantirna South VIC 3152  
Ph: 1300 300 301

CHANGEABLE-001-1