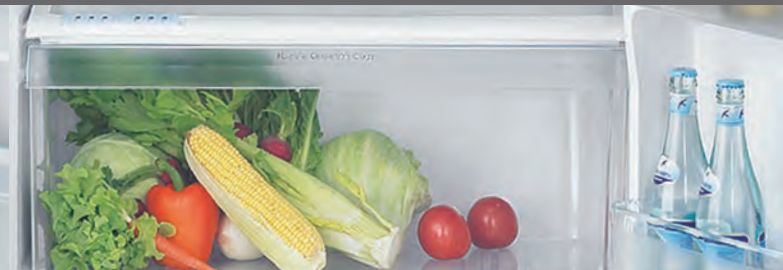


# REFRIGERATION RANGE



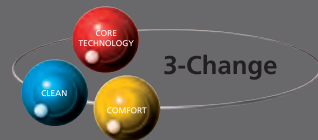
**HITACHI**  
Inspire the Next

# Home and Life Solutions

People have always thought of consumer products as having a single purpose.

Hitachi Home and Life Solutions are engineering a new phase of product development – one where consumer products are interactive and serve multiple purposes.

Leading the cutting edge of future development, Hitachi aims to improve people's lifestyles and become the global brand of choice.



Hitachi's 3-Change ethos means your refrigerator has been developed with cleanliness and comfort in mind, supported by Hitachi's own core technologies.



In today's modern kitchen, where good taste is the order of the day, you need a refrigerator that delivers on both superior styling and function. Through years of technological development and sophisticated design, Hitachi introduces you to one of the most advanced refrigerator ranges on the market.

A refrigerator range that not only symbolises your appreciation of good taste from the outside but retains the good taste of the food on the inside.

**REFRIGERATION RANGE**

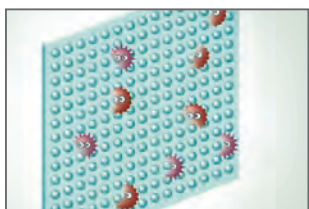


# Clean Focus

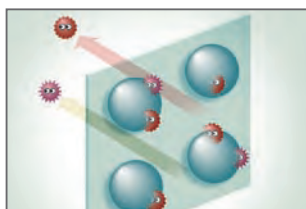
By combining three innovative technologies, Hitachi's Triple Clean System substantially reduces bacteria and odours, delivering clean air throughout your refrigerator.

## NANO TITANIUM FILTER

The Nano Titanium Filter is designed to be more dense than conventional anti-bacterial filters, trapping and substantially reducing bacteria and odours.



Nano Titanium Filter

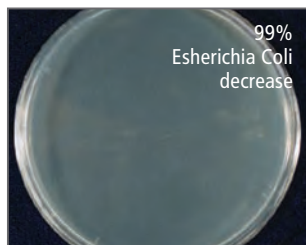


Conventional Filter

## Anti-Bacterial Effect (Esherichia Coli)<sup>2</sup>



Before test



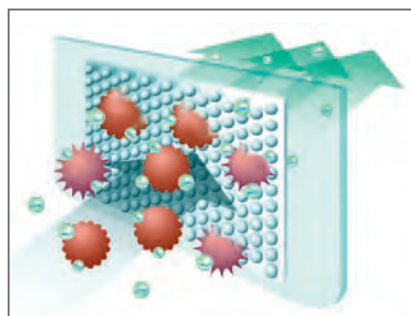
After 18 hours

99%  
Esherichia Coli  
decrease

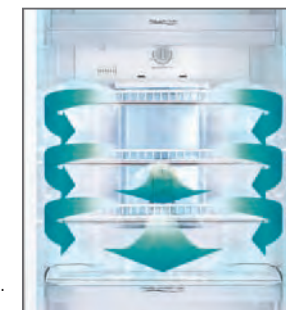
As bacteria attempt to travel through the filter the Nano Titanium agent, being smaller in size and more dense than conventional anti-bacterial agents, traps more bacteria, preventing up to 99.9%<sup>1</sup> of the particles from travelling through the Nano Titanium Filter. This means more purified air circulating through your fridge, resulting in less odours and longer lasting food.

## NEGATIVE IONS

Supporting the Nano Titanium Filter, negative ions, along with the chilled air, circulate throughout the compartment, adhering to odours and bacteria helping to suppress bacterial growth.



## ADVANCED MULTIFLOW AIR SYSTEM



Multiflow for 480 series shown. Other models may differ in flow pattern.

Hitachi's Advanced Multiflow Air System is a means of circulating clean air throughout your refrigerator. The Multiflow Air System works with negative ions and the Nano Titanium Filter to neutralise and trap bacteria and odours. The result is cleaner air and consistent temperature in all areas of your refrigerator helping your food to last longer.

1. Source: Japan Food Research Laboratories.  
2. Tested by Japan Food Research Laboratories. Approval No.104081532-001.  
Features may vary by model.



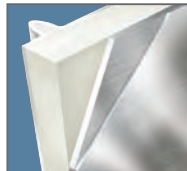
# Comfort



# Core Technology

## MOULD-PROOFING DOOR GASKET

The door gasket, which is prone to getting dirty and can be hard to get at, has undergone mould-proofing treatment for easier cleaning.

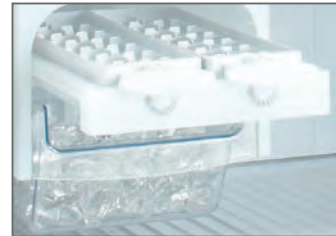


## ANTI-BACTERIAL DOOR COATING

The stainless steel model has been covered with a transparent coating. This coating contains an anti-bacterial agent making the refrigerator door resistant to dirt and fingerprints, making it easier to clean.

## TWIST ICE TRAYS

The convenient twist ice trays and large storage bank ensure you will always have ice on hand whenever you need it.



## TEMPERED GLASS SHELVES

Space saving and strong, Hitachi tempered glass shelves are highly scratch and bend resistant and can hold up to 100Kgs. With tempered edges you can easily mop up spills quickly and efficiently.

## GLIDE OUT CRISPER

Storing vegetables should be effortless. That's why Hitachi has introduced the glide out crisper. The easy sliding drawer allows you to access your vegetables quickly and easily.



## 2 WAY HUMIDITY CONTROL SYSTEM

The special 2 Way Humidity Control System gives you the added flexibility of altering the climate to suit a variety of different fruits and vegetables, keeping your food fresher for longer.



## WARRANTY

2 year in-home parts and labour warranty.  
Additional 3 year parts warranty on compressor.

Features may vary by model.



# Specifications



480L – Stainless Steel Look  
R480ET5 SLS



480L – Pure White  
R480ET5 PWH



430L – Stainless Steel Look  
R430AT5 SLS



430L – Pure White  
R430AT5 PWH



480L – Stainless Steel  
R480ET5X

## SPECIFICATIONS

			REFRIGERATION MODELS				
			R480ET5X	R480ET5 SLS	R480ET5 PWH	R430AT5 SLS	R430AT5 PWH
COLOUR			Stainless Steel	Stainless Steel Look	Pure White	Stainless Steel Look	Pure White
CAPACITY	TOTAL	Litres	480	480	480	430	430
	FREEZER	Litres	160	160	160	130	130
	REFRIGERATOR	Litres	320	320	320	300	300
COOLING SYSTEM			FROST FREE COOLING SYSTEM				
DIMENSIONS	WIDTH	mm	740	740	740	680	680
	HEIGHT	mm	1,700	1,700	1,700	1,780	1,780
	DEPTH	mm	710	710	710	695	695
REFRIGERATOR	SHELVES		Glass(2)	Glass(2)	Glass(2)	Glass(2)	Glass(2)
	ADJUSTABLE SHELF		•	•	•	•	•
	SLIDE CASE SHELF		•	•	•	-	-
	CHILLED COMPARTMENT		-	-	-	•	•
VEGETABLE	CRISPER SHELF		Glass	Glass	Glass	Glass	Glass
	2 WAY HUMIDITY CONTROLLER		•	•	•	•	•
FREEZER	FREEZER LAMP		•	•	•	-	-
	ICE TRAY/ ICE MAKER		Twist (2 pcs)	Twist (2 pcs)	Twist (2 pcs)	Twist (2 pcs)	Twist (2 pcs)
	SHELVES		Wire (1)	Wire (1)	Wire (1)	Wire (1)	Wire (1)
REFRIGERANT	R-134a	gr	170	170	170	140	140
ENERGY RATING		Stars	4	4	4	4	4
ENERGY CONSUMPTION		kWh/year	540	540	540	474	474
REQUIRED CLEARANCE	TOP	mm	300	300	300	300	300
	SIDE	mm	50	50	50	50	50
	REAR	mm	100	100	100	100	100

## FEATURES

TRIPLE CLEAN			•	•	•	•	•
NEGATIVE IONS			•	•	•	•	•
NANO TITANIUM FILTER			•	•	•	•	•
ADVANCED MULTIFLOW AIR SYSTEM			•	•	•	•	•
FOOT COVER			•	•	•	-	-
WIDE ROUND DESIGN			•	•	•	•	•
NON CFC			•	•	•	•	•
DOOR STORAGE OF REFRIGERATOR COMPARTMENT	TOP SHELF		MULTI-USE EGG CASE (EGG 14 PCS)				
	SECOND SHELF		UTILITY				
	THIRD SHELF		BASKET WITH 2 LITRE BOTTLE STORAGE				
	FOURTH SHELF		BASKET WITH 1.25 LITRE BOTTLE STORAGE				

FOR FURTHER INFORMATION CONTACT:  
HITACHI AUSTRALIA LIMITED (ABN 34 075 381 332)  
[HTTP://AUS.HITACHI.COM.AU](http://aus.hitachi.com.au)

**HITACHI**  
Inspire the Next

CALL 1800 HITACHI (1800 448 2244) FOR YOUR NEAREST STOCKIST  
HITACHI IS A REGISTERED TRADEMARK OF HITACHI LTD.

2006/03